

For Research Use Only

ENAH Polyclonal antibody

Catalog Number: 26421-1-AP



Basic Information

Catalog Number: 26421-1-AP	GenBank Accession Number: BC095481	Purification Method: Antigen affinity purification
Size: 150ul , Concentration: 1000 µg/ml by Nanodrop and 387 µg/ml by Bradford method using BSA as the standard;	GeneID (NCBI): 55740	Recommended Dilutions: WB 1:5000-1:50000 IHC 1:20-1:200 IF 1:50-1:500
Source: Rabbit	Full Name: enabled homolog (Drosophila)	
Isotype: IgG	Calculated MW: 591 aa, 67 kDa	
Immunogen Catalog Number: AG24200	Observed MW: 85-88 kDa, 75-80 kDa	

Applications

Tested Applications:

IF, IHC, WB, ELISA

Species Specificity:

human, mouse

Note-IHC: suggested antigen retrieval with TE buffer pH 9.0; (*) Alternatively, antigen retrieval may be performed with citrate buffer pH 6.0

Positive Controls:

WB : A431 cells, U-251 cells, MCF-7 cells, HUVEC cells, NIH/3T3 cells

IHC : human breast cancer tissue,

IF : MCF-7 cells,

Background Information

Storage

Storage:

Store at -20°C. Stable for one year after shipment.

Storage Buffer:

PBS with 0.02% sodium azide and 50% glycerol pH 7.3.

Aliquoting is unnecessary for -20°C storage

*** 20ul sizes contain 0.1% BSA

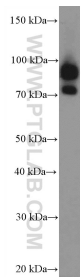
For technical support and original validation data for this product please contact:

T: 1 (888) 4PTGLAB (1-888-478-4522) (toll free in USA), or 1(312) 455-8498 (outside USA)

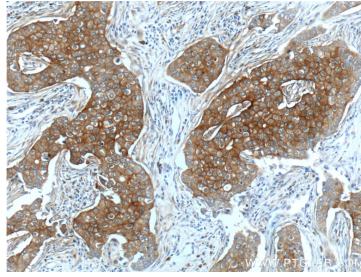
E: proteintech@ptglab.com
W: ptglab.com

This product is exclusively available under Proteintech Group brand and is not available to purchase from any other manufacturer.

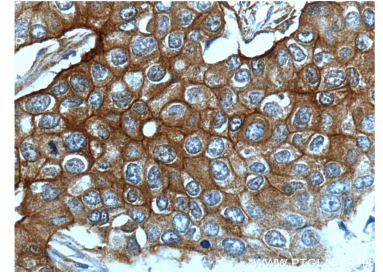
Selected Validation Data



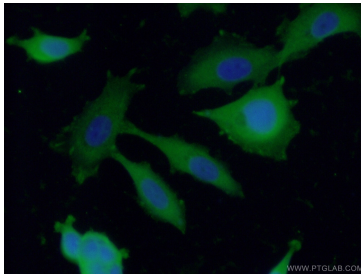
U-251 cells were subjected to SDS PAGE followed by western blot with 26421-1-AP (ENAH Antibody) at dilution of 1:2000 incubated at room temperature for 1.5 hours.



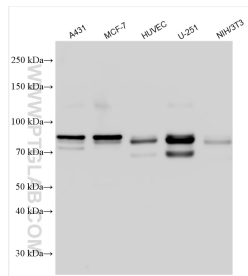
Immunohistochemical analysis of paraffin-embedded human breast cancer tissue slide using 26421-1-AP (ENAH Antibody) at dilution of 1:200 (under 10x lens).



Immunohistochemical analysis of paraffin-embedded human breast cancer tissue slide using 26421-1-AP (ENAH Antibody) at dilution of 1:200 (under 40x lens).



Immunofluorescent analysis of (-20°C Ethanol) fixed MCF-7 cells using 26421-1-AP (ENAH antibody) at dilution of 1:50 and Alexa Fluor 488-conjugated AffiniPure Goat Anti-Rabbit IgG(H+L).



Various lysates were subjected to SDS PAGE followed by western blot with 26421-1-AP (ENAH antibody) at dilution of 1:10000 incubated at room temperature for 1.5 hours.