

For Research Use Only

# LHCGR Polyclonal antibody

Catalog Number: 26424-1-AP

Featured Product

2 Publications



## Basic Information

### Catalog Number:

26424-1-AP

### Size:

150ul, Concentration: 600 ug/ml by Nanodrop and 333 ug/ml by Bradford method using BSA as the standard;

### Source:

Rabbit

### Isotype:

IgG

### Immunogen Catalog Number:

AG19259

### GenBank Accession Number:

BC157028

### GeneID (NCBI):

3973

### UNIPROT ID:

P22888

### Full Name:

LHCGR

### Calculated MW:

699 aa, 79 kDa

### Observed MW:

100 kDa

### Purification Method:

Antigen affinity purification

### Recommended Dilutions:

WB 1:500-1:2000

IHC 1:100-1:4000

IF-P 1:50-1:500

## Applications

### Tested Applications:

WB, IHC, IF-P, ELISA

### Cited Applications:

WB, IF

### Species Specificity:

human, mouse

### Cited Species:

mouse

**Note-IHC: suggested antigen retrieval with TE buffer pH 9.0; (\*) Alternatively, antigen retrieval may be performed with citrate buffer pH 6.0**

### Positive Controls:

WB : mouse ovary tissue,

IHC : human ovary cancer tissue, human ovary tissue, human thyroid cancer tissue, mouse ovary tissue

IF-P : mouse ovary tissue,

## Background Information

LHCGR, also known as LHR or LSHR, belongs to the rhodopsin-like family of G protein-coupled receptors (GPCRs) and plays a crucial role in the regulation of gonadal functions by stimulating steroidogenesis in response to luteinizing hormone (LH) or hCG (PMID: 15866423). Mutations in LHCGR gene result in familial male-limited precocious puberty, Leydig cell hypoplasia, and empty follicle syndrome (PMID: 30711030). LHCGR protein consists of 699 amino acids with a calculated molecular weight of 79 kDa. Due to massive glycosylation, the molecular mass of the mature LHCGR is higher (85-100 kDa) than the predicted molecular protein mass of 79 kDa (PMID: 23686864; 15866423; 29075189; 15969756).

## Notable Publications

Author	Pubmed ID	Journal	Application
Shi-Min Wang	35689841	Biochem Biophys Res Commun	WB,IF
Nengliang Duan	39252136	Biol Res	IF

## Storage

### Storage:

Store at -20°C. Stable for one year after shipment.

### Storage Buffer:

PBS with 0.02% sodium azide and 50% glycerol pH 7.3.

Aliquoting is unnecessary for -20°C storage

\*\*\* 20ul sizes contain 0.1% BSA

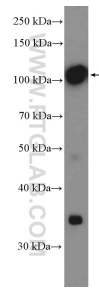
For technical support and original validation data for this product please contact:

T: 1 (888) 4PTGLAB (1-888-478-4522) (toll free in USA), or 1(312) 455-8498 (outside USA)

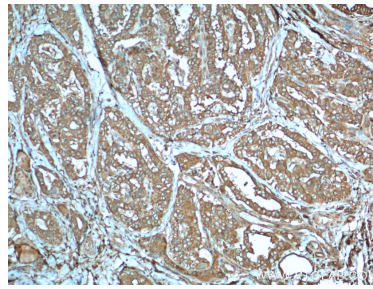
E: [proteintech@ptglab.com](mailto:proteintech@ptglab.com)  
W: [ptglab.com](http://ptglab.com)

This product is exclusively available under Proteintech Group brand and is not available to purchase from any other manufacturer.

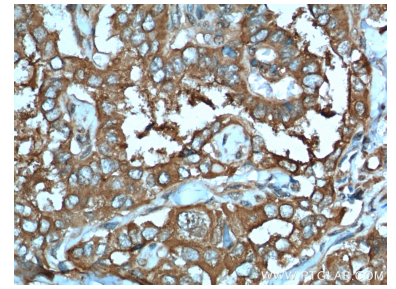
## Selected Validation Data



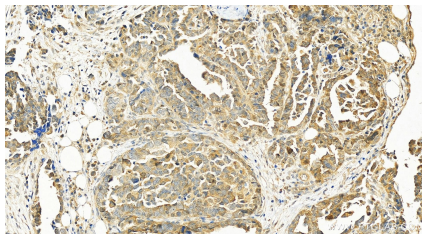
mouse ovary tissue were subjected to SDS PAGE followed by western blot with 26424-1-AP (LHCGR Antibody) at dilution of 1:1000 incubated at room temperature for 1.5 hours.



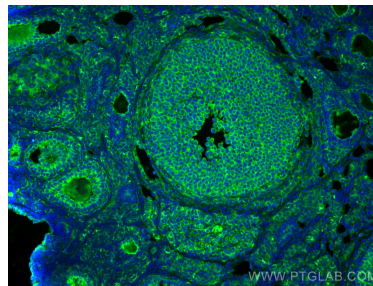
Immunohistochemical analysis of paraffin-embedded human thyroid cancer tissue slide using 26424-1-AP (LHCGR Antibody) at dilution of 1:100 (under 10x lens). Heat mediated antigen retrieval with Tris-EDTA buffer (pH 9.0).



Immunohistochemical analysis of paraffin-embedded human thyroid cancer tissue slide using 26424-1-AP (LHCGR Antibody) at dilution of 1:100 (under 40x lens). Heat mediated antigen retrieval with Tris-EDTA buffer (pH 9.0).



Immunohistochemical analysis of paraffin-embedded human ovarian cancer slide using 26424-1-AP (LHCGR antibody) at dilution of 1:4000 (under 20x lens). Heat mediated antigen retrieval with Tris-EDTA buffer (pH 9.0).



Immunofluorescent analysis of (4% PFA) fixed mouse ovary tissue using LHCGR antibody (26424-1-AP) at dilution of 1:200 and CoraLite®488-Conjugated AffiniPure Goat Anti-Rabbit IgG(H+L).