

For Research Use Only

RASSF3 Polyclonal antibody

Catalog Number: 26428-1-AP



Basic Information

Catalog Number: 26428-1-AP	GenBank Accession Number: BC100952	Purification Method: Antigen affinity purification
Size: 150ul , Concentration: 560 ug/ml by Nanodrop;	GeneID (NCBI): 283349	Recommended Dilutions: WB: 1:500-1:2000 IF/ICC: 1:200-1:800
Source: Rabbit	UNIPROT ID: Q86WH2	
Isotype: IgG	Full Name: Ras association (RalGDS/AF-6) domain family member 3	
Immunogen Catalog Number: AG15801	Calculated MW: 238 aa, 28 kDa	
	Observed MW: 28-30 kDa	

Applications

Tested Applications: WB, IF/ICC, ELISA	Positive Controls: WB : LNCaP cells, IF/ICC : HeLa cells,
Species Specificity: human	

Background Information

RASSF3 (Ras Association Domain Family Member 3) is an emerging tumor suppressor protein and a key member of the RASSF family, characterized by a conserved Ras Association (RA) domain. RASSF3 acts as a critical node in multiple tumor-suppressive pathways. It directly stabilizes and activates the p53 protein, thereby inducing cell cycle arrest and apoptosis. RASSF3 also contributes to the maintenance of genomic integrity by participating in the DNA damage response. Furthermore, it modulates major signaling cascades such as the Hippo and NF- κ B pathways, influencing cell proliferation, survival, and inflammation.

Storage

Storage:
Store at -20°C. Stable for one year after shipment.
Storage Buffer:
PBS with 0.02% sodium azide and 50% glycerol, pH7.3
Aliquoting is unnecessary for -20°C storage

*** 20ul sizes contain 0.1% BSA

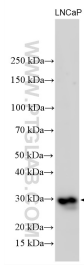
For technical support and original validation data for this product please contact:

T: 1 (888) 4PTGLAB (1-888-478-4522) (toll free in USA), or 1(312) 455-8498 (outside USA)

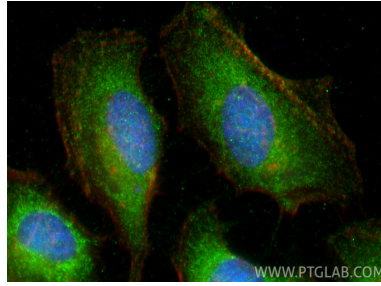
E: proteintech@ptglab.com
W: ptglab.com

This product is exclusively available under Proteintech Group brand and is not available to purchase from any other manufacturer.

Selected Validation Data



LNCaP cells were subjected to SDS PAGE followed by western blot with 26428-1-AP (RASSF3 antibody) at dilution of 1:1000 incubated at room temperature for 1.5 hours.



Immunofluorescent analysis of (-20°C Ethanol) fixed HeLa cells using RASSF3 antibody (26428-1-AP) at dilution of 1:400 and CoraLite® 488-Conjugated Goat Anti-Rabbit IgG(H+L) (SA00013-2), CL594-Phalloidin (red).