

For Research Use Only

NPRL3 Polyclonal antibody

Catalog Number: 26446-1-AP



Basic Information

Catalog Number: 26446-1-AP	GenBank Accession Number: BC004185	Purification Method: Antigen affinity purification
Size: 150ul , Concentration: 550 ug/ml by Nanodrop;	GeneID (NCBI): 8131	Recommended Dilutions: WB: 1:1000-1:4000 IHC: 1:200-1:800
Source: Rabbit	UNIPROT ID: Q12980	
Isotype: IgG	Full Name: chromosome 16 open reading frame 35	
Immunogen Catalog Number: AG24045	Calculated MW: 64 kDa	
	Observed MW: 63 kDa	

Applications

Tested Applications: WB, IHC, ELISA	Positive Controls: WB : K-562 cells, LNCaP cells, THP-1 cells
Species Specificity: human	IHC : human cervical cancer tissue,

Note-IHC: suggested antigen retrieval with TE buffer pH 9.0; (*) Alternatively, antigen retrieval may be performed with citrate buffer pH 6.0

Background Information

NPRL3 (Nitrogen Permease Regulator Like 3) is a highly conserved tumor suppressor protein. As a core component of the GATOR1 complex, it serves as a key node in the amino acid sensing pathway and negatively regulates the mTORC1 signaling pathway, thereby controlling cell growth, proliferation, and autophagy. Loss of its function leads to hyperactivation of mTORC1 signaling. In neuroscience, loss-of-function mutations in NPRL3 are an important genetic cause of familial focal epilepsy, such as focal epilepsy with variable foci. In oncology, it is frequently inactivated through epigenetic silencing in various cancers, making it a significant tumor suppressor and a potential biomarker.

Storage

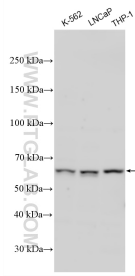
Storage:
Store at -20°C. Stable for one year after shipment.
Storage Buffer:
PBS with 0.02% sodium azide and 50% glycerol, pH7.3
Aliquoting is unnecessary for -20°C storage

*** 20ul sizes contain 0.1% BSA

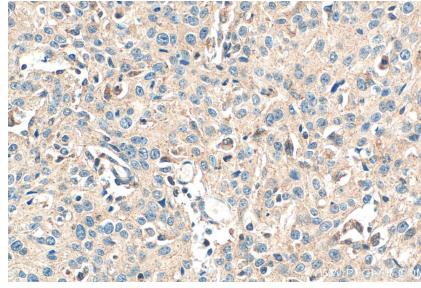
For technical support and original validation data for this product please contact:
T: 1 (888) 4PTGLAB (1-888-478-4522) (toll free in USA), or 1(312) 455-8498 (outside USA) E: proteintech@ptglab.com
W: ptglab.com

This product is exclusively available under Proteintech Group brand and is not available to purchase from any other manufacturer.

Selected Validation Data



Various lysates were subjected to SDS PAGE followed by western blot with 26446-1-AP (C16orf35 antibody) at dilution of 1:2000 incubated at room temperature for 1.5 hours.



Immunohistochemical analysis of paraffin-embedded human cervical cancer tissue slide using 26446-1-AP (NPRL3 antibody) at dilution of 1:400 (under 40x lens). Heat mediated antigen retrieval with Tris-EDTA buffer (pH 9.0).