

For Research Use Only

# NPRL3 Polyclonal antibody, PBS Only

Catalog Number: 26446-1-PBS



## Basic Information

**Catalog Number:**

26446-1-PBS

**Size:**

100ug, Concentration: 1 mg/ml by Nanodrop;

**Source:**

Rabbit

**Isotype:**

IgG

**Immunogen Catalog Number:**

AG24045

**GenBank Accession Number:**

BC004185

**GeneID (NCBI):**

8131

**UNIPROT ID:**

Q12980

**Full Name:**

chromosome 16 open reading frame

35

**Calculated MW:**

64 kDa

**Observed MW:**

63 kDa

**Purification Method:**

Antigen affinity purification

## Applications

**Tested Applications:**

WB, IHC, Indirect ELISA

**Species Specificity:**

human

## Background Information

NPRL3 (Nitrogen Permease Regulator Like 3) is a highly conserved tumor suppressor protein. As a core component of the GATOR1 complex, it serves as a key node in the amino acid sensing pathway and negatively regulates the mTORC1 signaling pathway, thereby controlling cell growth, proliferation, and autophagy. Loss of its function leads to hyperactivation of mTORC1 signaling. In neuroscience, loss-of-function mutations in NPRL3 are an important genetic cause of familial focal epilepsy, such as focal epilepsy with variable foci. In oncology, it is frequently inactivated through epigenetic silencing in various cancers, making it a significant tumor suppressor and a potential biomarker.

## Storage

**Storage:**

Store at -80°C.

**Storage Buffer:**

PBS only, pH7.3

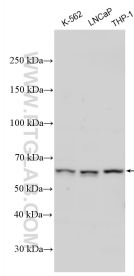
For technical support and original validation data for this product please contact:

T: 1 (888) 4PTGLAB (1-888-478-4522) (toll free in USA), or 1(312) 455-8498 (outside USA)

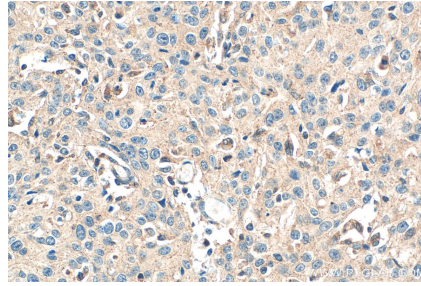
E: [proteintech@ptglab.com](mailto:proteintech@ptglab.com)  
W: [ptglab.com](http://ptglab.com)

**This product is exclusively available under Proteintech Group brand and is not available to purchase from any other manufacturer.**

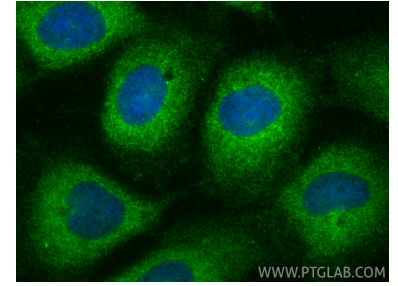
## Selected Validation Data



Various lysates were subjected to SDS PAGE followed by western blot with 26446-1-AP (C16orf35 antibody) at dilution of 1:2000 incubated at room temperature for 1.5 hours. This data was developed using the same antibody clone with 26446-1-PBS in a different storage buffer formulation.



Immunohistochemical analysis of paraffin-embedded human cervical cancer tissue slide using 26446-1-AP (NPRL3 antibody) at dilution of 1:400 (under 40x lens). Heat mediated antigen retrieval with Tris-EDTA buffer (pH 9.0). This data was developed using the same antibody clone with 26446-1-PBS in a different storage buffer formulation.



Immunofluorescent analysis of (-20°C Methanol) fixed A431 cells using NPRL3 antibody (26446-1-AP) at dilution of 1:400 and CoraLite®488-Conjugated Goat Anti-Rabbit IgG(H+L) (SA00013-2). This data was developed using the same antibody clone with 26446-1-PBS in a different storage buffer formulation.