

For Research Use Only

LILRB1 Polyclonal antibody

Catalog Number: 26455-1-AP **1 Publications**



Basic Information

Catalog Number: 26455-1-AP	GenBank Accession Number: BC015731	Purification Method: Antigen affinity purification
Size: 150ul , Concentration: 600 µg/ml by Nanodrop and 333 µg/ml by Bradford method using BSA as the standard;	GeneID (NCBI): 10859	Recommended Dilutions: WB 1:500-1:2000 IHC 1:200-1:800
Source: Rabbit	Full Name: leukocyte immunoglobulin-like receptor, subfamily B (with TM and ITIM domains), member 1	
Isotype: IgG	Calculated MW: 71 kDa	
Immunogen Catalog Number: AG24795	Observed MW: 71 and 110 kDa	

Applications

Tested Applications: FC, IHC, WB, ELISA	Positive Controls: WB : Daudi cells, Ramos cells
Cited Applications: IHC	IHC : human liver tissue, human tonsillitis tissue
Species Specificity: human	
Cited Species: human	

Note-IHC: suggested antigen retrieval with TE buffer pH 9.0; (*) Alternatively, antigen retrieval may be performed with citrate buffer pH 6.0

Background Information

LILRB1, also named as CD85J or ILT2, includes four C2 Ig domains binding HLA class I molecules in the extracellular region and a cytoplasmic domain containing four immunoreceptor tyrosine-based inhibition motifs (ITIM). LILRB1 is a surface glycoprotein detected on the surface of B cells, monocytes, dendritic cells, T cells and NK cells. The predicted MW of LILRB1 is 71 kDa and 26455-1-AP antibody recognizes the 71 and 110 kDa which might be the noncovalently linked monomer. (PMID:17601702; 15474475; 17549736; 24098421)

Notable Publications

Author	Pubmed ID	Journal	Application
Xiaoyu Xu	37075669	Int Immunopharmacol	IHC

Storage

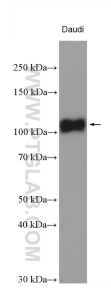
Storage:
Store at -20°C. Stable for one year after shipment.
Storage Buffer:
PBS with 0.02% sodium azide and 50% glycerol pH 7.3.
Aliquoting is unnecessary for -20°C storage

*** 20ul sizes contain 0.1% BSA

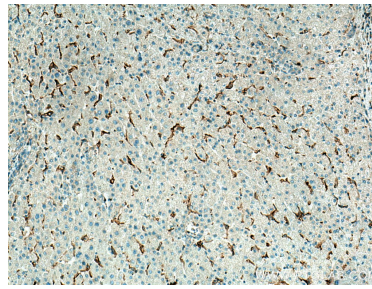
For technical support and original validation data for this product please contact:
T: 1 (888) 4PTGLAB (1-888-478-4522) (toll free in USA), or 1(312) 455-8498 (outside USA)
E: proteintech@ptglab.com
W: ptglab.com

This product is exclusively available under Proteintech Group brand and is not available to purchase from any other manufacturer.

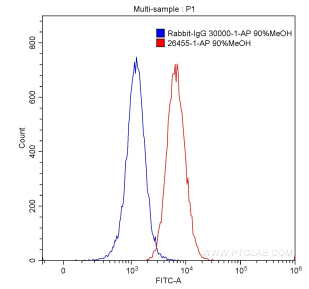
Selected Validation Data



Various lysates were subjected to SDS PAGE followed by western blot with 26455-1-AP (LILRB1 antibody) at dilution of 1:1000 incubated at room temperature for 1.5 hours.



Immunohistochemical analysis of paraffin-embedded human liver tissue slide using 26455-1-AP (LILRB1 antibody) at dilution of 1:400 (under 10x lens). Heat mediated antigen retrieval with Tris-EDTA buffer (pH 9.0).



1×10^6 Ramos cells were stained with 0.20 ug Anti-Human LILRB1 (26455-1-AP) (red) or 0.20 ug control antibody (blue) and CoraLite®488-Conjugated AffiniPure Goat Anti-Rabbit IgG(H+L) with dilution 1:1000. Fixed with 90% MeOH.