

For Research Use Only

SFRP1 Polyclonal antibody

Catalog Number: 26460-1-AP **2 Publications**



Basic Information

Catalog Number: 26460-1-AP	GenBank Accession Number: BC036503	Purification Method: Antigen affinity purification
Size: 150ul , Concentration: 700 µg/ml by Nanodrop;	GeneID (NCBI): 6422	Recommended Dilutions: WB 1:2000-1:12000 IHC 1:50-1:500 IF 1:50-1:500
Source: Rabbit	Full Name: secreted frizzled-related protein 1	
Isotype: IgG	Calculated MW: 314 aa, 35 kDa	
Immunogen Catalog Number: AG24844	Observed MW: 30-35 kDa	

Applications

Tested Applications:
IF, IHC, WB, ELISA

Cited Applications:
IHC, WB

Species Specificity:
human, mouse

Cited Species:
human, rat

Note-IHC: suggested antigen retrieval with TE buffer pH 9.0; (*) Alternatively, antigen retrieval may be performed with citrate buffer pH 6.0

Positive Controls:

WB: A549 cells, NIH/3T3 cells, mouse kidney tissue, rat kidney tissue, SH-SY5Y cells, U2OS cells, mouse testis tissue

IHC: human breast cancer tissue, human colon tissue

IF: HeLa cells,

Background Information

Notable Publications

Author	Pubmed ID	Journal	Application
Keita Ipposhi	34572140	Cells	IHC
Liansheng Sha	33310972	Aging (Albany NY)	WB

Storage

Storage:

Store at -20°C. Stable for one year after shipment.

Storage Buffer:

PBS with 0.02% sodium azide and 50% glycerol pH 7.3.

Aliquoting is unnecessary for -20°C storage

***** 20ul sizes contain 0.1% BSA**

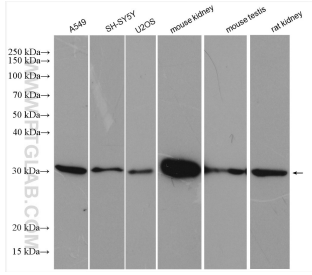
For technical support and original validation data for this product please contact:

T: 1 (888) 4PTGLAB (1-888-478-4522) (toll free in USA), or 1(312) 455-8498 (outside USA)

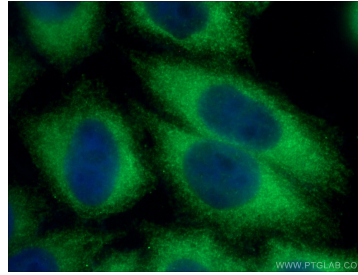
E: proteintech@ptglab.com
W: ptglab.com

This product is exclusively available under Proteintech Group brand and is not available to purchase from any other manufacturer.

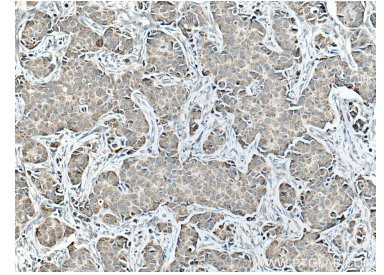
Selected Validation Data



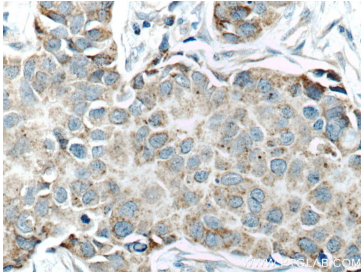
Various lysates were subjected to SDS PAGE followed by western blot with 26460-1-AP (SFRP1 antibody) at dilution of 1:6000 incubated at room temperature for 1.5 hours.



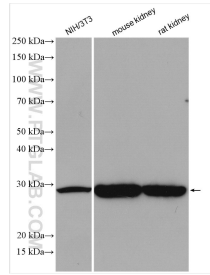
Immunofluorescent analysis of (-20°C Ethanol) fixed HeLa cells using 26460-1-AP (SFRP1 antibody) at dilution of 1:50 and Alexa Fluor 488-Conjugated AffiniPure Goat Anti-Rabbit IgG(H+L).



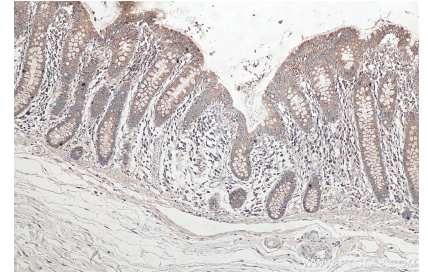
Immunohistochemical analysis of paraffin-embedded human breast cancer tissue slide using 26460-1-AP (SFRP1 antibody) at dilution of 1:200 (under 10x lens. Heat mediated antigen retrieval with Tris-EDTA buffer (pH 9.0).



Immunohistochemical analysis of paraffin-embedded human breast cancer tissue slide using 26460-1-AP (SFRP1 antibody) at dilution of 1:200 (under 40x lens. Heat mediated antigen retrieval with Tris-EDTA buffer (pH 9.0).



Various lysates were subjected to SDS PAGE followed by western blot with 26460-1-AP (SFRP1 antibody) at dilution of 1:6000 incubated at room temperature for 1.5 hours.



Immunohistochemical analysis of paraffin-embedded human colon tissue slide using 26460-1-AP (SFRP1 antibody) at dilution of 1:4000 (under 10x lens). Heat mediated antigen retrieval with Tris-EDTA buffer (pH 9.0).