

For Research Use Only

# EAF6 Polyclonal antibody

Catalog Number: 26465-1-AP

2 Publications



## Basic Information

Catalog Number:

26465-1-AP

Size:

150ul, Concentration: 800 ug/ml by Nanodrop and 387 ug/ml by Bradford method using BSA as the standard;

Source:

Rabbit

Isotype:

IgG

Immunogen Catalog Number:

AG23971

GenBank Accession Number:

BC016328

GeneID (NCBI):

64769

UNIPROT ID:

Q9HAF1

Full Name:

chromosome 1 open reading frame

149

Observed MW:

22-28 kDa

Purification Method:

Antigen affinity purification

Recommended Dilutions:

WB 1:500-1:1000

IP 0.5-4.0 ug for 1.0-3.0 mg of total protein lysate

## Applications

Tested Applications:

WB, IP, ELISA

Cited Applications:

WB

Species Specificity:

human

Cited Species:

human, mouse

Positive Controls:

WB : HepG2 cells, HeLa cells, Jurkat cells

IP : HepG2 cells,

## Notable Publications

Author	Pubmed ID	Journal	Application
Matthew L Hemming	35499757	Cancer Discov	WB
Lifang Hu	33664480	Cell Death Differ	WB

## Storage

Storage:

Store at -20°C. Stable for one year after shipment.

Storage Buffer:

PBS with 0.02% sodium azide and 50% glycerol pH 7.3.

Aliquoting is unnecessary for -20°C storage

\*\*\* 20ul sizes contain 0.1% BSA

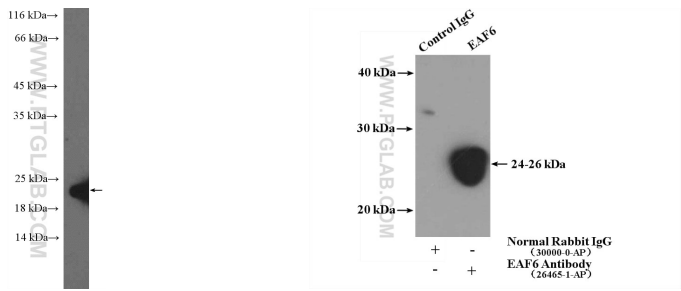
For technical support and original validation data for this product please contact:

T: 1 (888) 4PTGLAB (1-888-478-4522) (toll free in USA), or 1(312) 455-8498 (outside USA)

E: [proteintech@ptglab.com](mailto:proteintech@ptglab.com)  
W: [ptglab.com](http://ptglab.com)

This product is exclusively available under Proteintech Group brand and is not available to purchase from any other manufacturer.

Selected Validation Data



HepG2 cells were subjected to SDS PAGE followed by western blot with 26465-1-AP (EAF6 antibody at dilution of 1:600 incubated at room temperature for 1.5 hours.

IP result of anti-EAF6 (IP:26465-1-AP, 4ug; Detection:26465-1-AP 1:500) with HepG2 cells lysate 3480ug.