

For Research Use Only

# GLE1 Polyclonal antibody

Catalog Number: 26466-1-AP



## Basic Information

**Catalog Number:**

26466-1-AP

**Size:**

150ul , Concentration: 600 ug/ml by Nanodrop and 400 ug/ml by Bradford method using BSA as the standard;

**Source:**

Rabbit

**Isotype:**

IgG

**Immunogen Catalog Number:**

AG24208

**GenBank Accession Number:**

BC030012

**GeneID (NCBI):**

2733

**UNIPROT ID:**

Q53GS7

**Full Name:**

GLE1 RNA export mediator homolog (yeast)

**Calculated MW:**

80 kDa

**Observed MW:**

79-80 kDa

**Purification Method:**

Antigen affinity purification

**Recommended Dilutions:**

WB 1:500-1:2000

IF/ICC 1:50-1:500

## Applications

**Tested Applications:**

WB, IF/ICC, ELISA

**Species Specificity:**

human

**Positive Controls:**

**WB :** HeLa cells, A549 cells, MCF-7 cells, PC-3 cells, HepG2 cells, Jurkat cells

**IF/ICC :** HepG2 cells,

## Storage

**Storage:**

Store at -20°C. Stable for one year after shipment.

**Storage Buffer:**

PBS with 0.02% sodium azide and 50% glycerol pH 7.3.

Aliquoting is unnecessary for -20°C storage

\*\*\* 20ul sizes contain 0.1% BSA

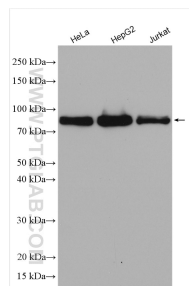
For technical support and original validation data for this product please contact:

T: 1 (888) 4PTGLAB (1-888-478-4522) (toll free in USA), or 1(312) 455-8498 (outside USA)

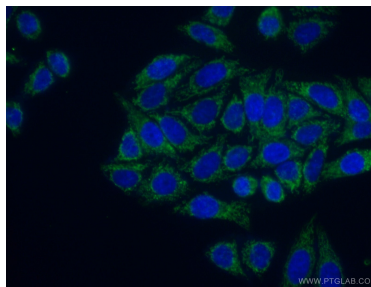
E: [proteintech@ptglab.com](mailto:proteintech@ptglab.com)  
W: [ptglab.com](http://ptglab.com)

This product is exclusively available under Proteintech Group brand and is not available to purchase from any other manufacturer.

## Selected Validation Data



Various lysates were subjected to SDS PAGE followed by western blot with 26466-1-AP (GLE1 antibody) at dilution of 1:1000 incubated at room temperature for 1.5 hours.



Immunofluorescent analysis of (4% PFA) fixed HepG2 cells using 26466-1-AP (GLE1 antibody) at dilution of 1:50 and Alexa Fluor 488-conjugated AffiniPure Goat Anti-Rabbit IgG(H+L).