

For Research Use Only

# Mitoferrin 1 Polyclonal antibody

Catalog Number: 26469-1-AP

11 Publications



## Basic Information

**Catalog Number:**

26469-1-AP

**Size:**

150ul, Concentration: 800 µg/ml by Nanodrop and 400 µg/ml by Bradford method using BSA as the standard;

**Source:**

Rabbit

**Isotype:**

IgG

**Immunogen Catalog Number:**

AG24876

**GenBank Accession Number:**

BC132799

**GeneID (NCBI):**

51312

**UNIPROT ID:**

Q9NYZ2

**Full Name:**

solute carrier family 25, member 37

**Observed MW:**

37 kDa

**Purification Method:**

Antigen affinity purification

**Recommended Dilutions:**

WB 1:500-1:3000

IHC 1:50-1:500

## Applications

**Tested Applications:**

IHC, WB, ELISA

**Cited Applications:**

WB, IHC, IF

**Species Specificity:**

human, mouse, rat

**Cited Species:**

human, mouse

**Note-IHC: suggested antigen retrieval with TE buffer pH 9.0; (\*) Alternatively, antigen retrieval may be performed with citrate buffer pH 6.0**

**Positive Controls:**

WB : L02 cells, mouse liver tissue, mouse spleen tissue, rat spleen tissue

IHC : human liver tissue,

## Notable Publications

Author	Pubmed ID	Journal	Application
Peina Wang	36179435	Redox Biol	WB
Nunziata Maio	30765471	Haematologica	WB
Tong Zhang	35121990	Nat Cancer	WB, IHC

## Storage

**Storage:**

Store at -20°C. Stable for one year after shipment.

**Storage Buffer:**

PBS with 0.02% sodium azide and 50% glycerol pH 7.3.

Aliquoting is unnecessary for -20°C storage

\*\*\* 20ul sizes contain 0.1% BSA

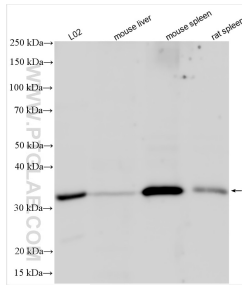
For technical support and original validation data for this product please contact:

T: 1 (888) 4PTGLAB (1-888-478-4522) (toll free in USA), or 1(312) 455-8498 (outside USA)

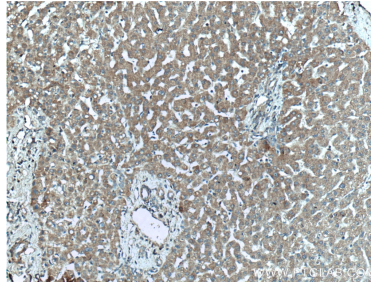
E: proteintech@ptglab.com  
W: ptglab.com

This product is exclusively available under Proteintech Group brand and is not available to purchase from any other manufacturer.

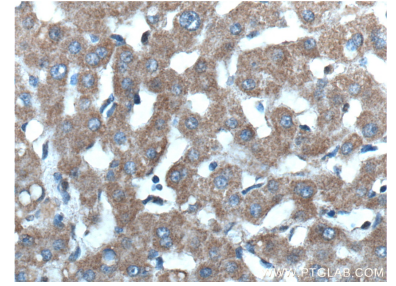
## Selected Validation Data



Various lysates were subjected to SDS PAGE followed by western blot with 26469-1-AP (Mitoferrin 1 antibody) at dilution of 1:1500 incubated at room temperature for 1.5 hours.



Immunohistochemical analysis of paraffin-embedded human liver tissue slide using 26469-1-AP (Mitoferrin 1 antibody) at dilution of 1:200 (under 10x lens).



Immunohistochemical analysis of paraffin-embedded human liver tissue slide using 26469-1-AP (Mitoferrin 1 antibody) at dilution of 1:200 (under 40x lens).