

For Research Use Only

OTC Polyclonal antibody

Catalog Number: 26470-1-AP **7 Publications**



Basic Information

Catalog Number: 26470-1-AP	GenBank Accession Number: BC074745	Purification Method: Antigen affinity purification
Size: 150ul , Concentration: 900 µg/ml by Nanodrop;	GeneID (NCBI): 5009	Recommended Dilutions: WB 1:500-1:3000 IHC 1:300-1:1200
Source: Rabbit	Full Name: ornithine carbamoyltransferase	
Isotype: IgG	Calculated MW: 354 aa, 40 kDa	
Immunogen Catalog Number: AG24186	Observed MW: 36-40 kDa	

Applications

Tested Applications: IHC, WB, ELISA	Positive Controls:
Cited Applications: IF, WB	WB : mouse liver tissue, rat liver tissue
Species Specificity: human, mouse, rat	IHC : human liver cancer tissue,
Cited Species: human, mouse	

Note-IHC: suggested antigen retrieval with TE buffer pH 9.0; (*) Alternatively, antigen retrieval may be performed with citrate buffer pH 6.0

Background Information

Ornithine transcarbamylase (OTC) is a liver and intestinal mucosa-located, intramitochondrial, rate-limiting enzyme in the urea cycle. It catalyzes the reaction that converts ornithine and carbamoyl phosphate into citrulline, which is the second step of the urea cycle, to detoxify the ammonia produced from amino acid catabolism.

Notable Publications

Author	Pubmed ID	Journal	Application
Weiwei Dai	36256480	J Clin Invest	WB,IF
Wei Wang	33957483	Biochem Biophys Res Commun	WB
Chaojun Yan	31177901	Autophagy	WB

Storage

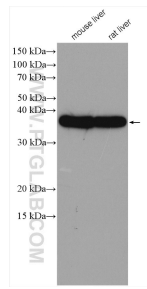
Storage:
Store at -20°C. Stable for one year after shipment.
Storage Buffer:
PBS with 0.02% sodium azide and 50% glycerol pH 7.3.
Aliquoting is unnecessary for -20°C storage

*** 20ul sizes contain 0.1% BSA

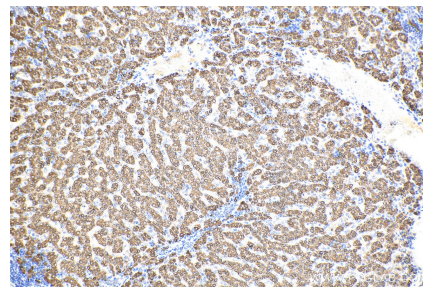
For technical support and original validation data for this product please contact:
T: 1 (888) 4PTGLAB (1-888-478-4522) (toll free in USA), or 1(312) 455-8498 (outside USA)
E: proteintech@ptglab.com
W: ptglab.com

This product is exclusively available under Proteintech Group brand and is not available to purchase from any other manufacturer.

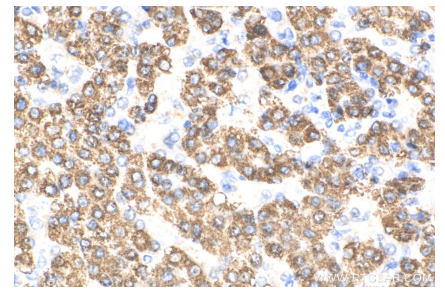
Selected Validation Data



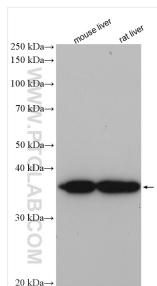
Various lysates were subjected to SDS PAGE followed by western blot with 26470-1-AP (OTC antibody) at dilution of 1:1500 incubated at room temperature for 1.5 hours.



Immunohistochemical analysis of paraffin-embedded human liver cancer tissue slide using 26470-1-AP (OTC antibody) at dilution of 1:600 (under 10x lens). Heat mediated antigen retrieval with Tris-EDTA buffer (pH 9.0).



Immunohistochemical analysis of paraffin-embedded human liver cancer tissue slide using 26470-1-AP (OTC antibody) at dilution of 1:600 (under 40x lens). Heat mediated antigen retrieval with Tris-EDTA buffer (pH 9.0).



Various lysates were subjected to SDS PAGE followed by western blot with 26470-1-AP (OTC antibody) at dilution of 1:6000 incubated at room temperature for 1.5 hours.