

For Research Use Only

# SPC25 Polyclonal antibody

Catalog Number: 26474-1-AP

Featured Product

3 Publications



## Basic Information

### Catalog Number:

26474-1-AP

### Size:

150ul, Concentration: 400 ug/ml by Nanodrop and 300 ug/ml by Bradford method using BSA as the standard;

### Source:

Rabbit

### Isotype:

IgG

### Immunogen Catalog Number:

AG23985

### GenBank Accession Number:

BC022255

### GeneID (NCBI):

57405

### UNIPROT ID:

Q9HBM1

### Full Name:

SPC25, NDC80 kinetochore complex component, homolog (S. cerevisiae)

### Observed MW:

26-30 kDa

### Purification Method:

Antigen affinity purification

### Recommended Dilutions:

WB 1:1000-1:4000

IHC 1:50-1:500

## Applications

### Tested Applications:

WB, IHC, ELISA

### Cited Applications:

WB, IHC

### Species Specificity:

human, mouse

### Cited Species:

human

**Note-IHC: suggested antigen retrieval with TE buffer pH 9.0; (\*) Alternatively, antigen retrieval may be performed with citrate buffer pH 6.0**

### Positive Controls:

WB : SKOV-3 cells, THP-1 cells

IHC : mouse spleen tissue,

## Notable Publications

Author	Pubmed ID	Journal	Application
Aya Fukuizumi	34746885	JTO Clin Res Rep	WB,IHC
Baozhu Zhang	33408271	Aging (Albany NY)	IHC
Wenqian Zhang	38894536	Cell Biol Int	WB

## Storage

### Storage:

Store at -20°C. Stable for one year after shipment.

### Storage Buffer:

PBS with 0.02% sodium azide and 50% glycerol, pH7.3

Aliquoting is unnecessary for -20°C storage

\*\*\* 20ul sizes contain 0.1% BSA

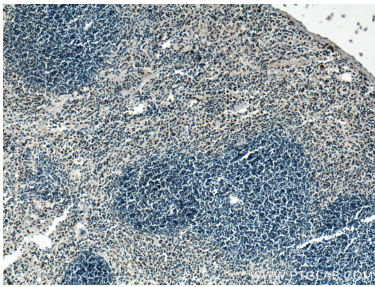
For technical support and original validation data for this product please contact:

T: 1 (888) 4PTGLAB (1-888-478-4522) (toll free in USA), or 1(312) 455-8498 (outside USA)

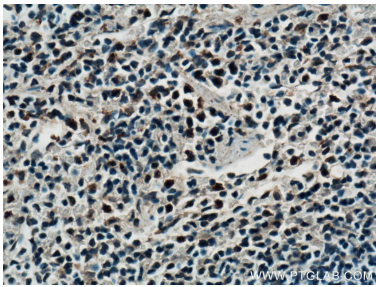
E: [proteintech@ptglab.com](mailto:proteintech@ptglab.com)  
W: [ptglab.com](http://ptglab.com)

This product is exclusively available under Proteintech Group brand and is not available to purchase from any other manufacturer.

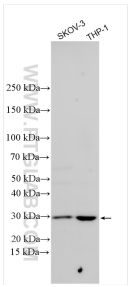
Selected Validation Data



Immunohistochemical analysis of paraffin-embedded mouse spleen tissue slide using 26474-1-AP (SPC25 antibody) at dilution of 1:200 (under 10x lens). Heat mediated antigen retrieval with Tris-EDTA buffer (pH 9.0).



Immunohistochemical analysis of paraffin-embedded mouse spleen tissue slide using 26474-1-AP (SPC25 antibody) at dilution of 1:200 (under 40x lens). Heat mediated antigen retrieval with Tris-EDTA buffer (pH 9.0).



Various lysates were subjected to SDS PAGE followed by western blot with 26474-1-AP (SPC25 antibody) at dilution of 1:2000 incubated at room temperature for 1.5 hours.