

For Research Use Only

Plakophilin 2 Polyclonal antibody

Catalog Number: 26479-1-AP



Basic Information

Catalog Number:

26479-1-AP

Size:

150ul, Concentration: 750 µg/ml by Nanodrop;

Source:

Rabbit

Isotype:

IgG

Immunogen Catalog Number:

AG24155

GenBank Accession Number:

BC094762

GeneID (NCBI):

5318

UNIPROT ID:

Q99959

Full Name:

plakophilin 2

Calculated MW:

837 aa, 93 kDa

Observed MW:

90 kDa

Purification Method:

Antigen affinity purification

Recommended Dilutions:

WB 1:1000-1:6000

IP 0.5-4.0 ug for 1.0-3.0 mg of total protein lysate

Applications

Tested Applications:

IP, WB, ELISA

Species Specificity:

human, rat

Positive Controls:

WB : Caco-2 cells, HepG2 cells, rat heart tissue

IP : HepG2 cells,

Background Information

Plakophilin 2 also known as PKP2, belongs to the beta-catenin family. Plakophilin proteins contain numerous armadillo repeats, localize to cell desmosomes and nuclei, and participate in linking cadherins to intermediate filaments in the cytoskeleton (PMID: 10828611). Mutations in PKP2 are associated with Arrhythmogenic right ventricular dysplasia, familial, 9 (ARVD9)(PMID: 15489853).

Storage

Storage:

Store at -20°C. Stable for one year after shipment.

Storage Buffer:

PBS with 0.02% sodium azide and 50% glycerol pH 7.3.

Aliquoting is unnecessary for -20°C storage

*** 20ul sizes contain 0.1% BSA

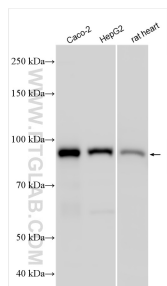
For technical support and original validation data for this product please contact:

T: 1 (888) 4PTGLAB (1-888-478-4522) (toll free in USA), or 1(312) 455-8498 (outside USA)

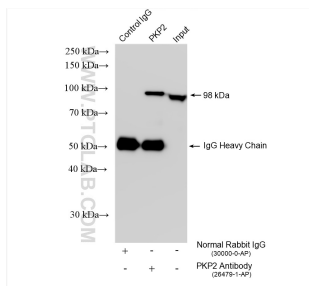
E: proteintech@ptglab.com
W: ptglab.com

This product is exclusively available under Proteintech Group brand and is not available to purchase from any other manufacturer.

Selected Validation Data



Various lysates were subjected to SDS PAGE followed by western blot with 26479-1-AP (Plakophilin 2 antibody) at dilution of 1:3000 incubated at room temperature for 1.5 hours.



IP result of anti-Plakophilin 2 (IP:26479-1-AP, 4ug; Detection:26479-1-AP 1:1000) with HepG2 cells lysate 2200 ug.