

For Research Use Only

# GNB1L Polyclonal antibody

Catalog Number: 26484-1-AP



## Basic Information

### Catalog Number:

26484-1-AP

### Size:

150ul , Concentration: 450 ug/ml by Nanodrop;

### Source:

Rabbit

### Isotype:

IgG

### Immunogen Catalog Number:

AG24391

### GenBank Accession Number:

BC012060

### GeneID (NCBI):

54584

### UNIPROT ID:

Q9BYB4

### Full Name:

guanine nucleotide binding protein (G protein), beta polypeptide 1-like

### Calculated MW:

327 aa, 36 kDa

### Observed MW:

36 kDa, 18 kDa

### Purification Method:

Antigen affinity purification

### Recommended Dilutions:

WB 1:500-1:2000

## Applications

### Tested Applications:

WB, ELISA

### Species Specificity:

human

### Positive Controls:

WB : A549 cells, Jurkat cells, MCF-7 cells

## Background Information

GNB1L (G-protein subunit beta 1 like), located at 22q11.2, encodes a G-protein L-subunit-like polypeptide which is a member of the WD repeat protein family (PMID: 20538345). In humans, the hemizygous deletion of GNB1L can cause sensorimotor gating defects, which are related to schizophrenia and other serious mental diseases (PMID: 32847500). Moreover, GNB1L is a key regulator of DDR signaling via its role as a co-chaperone specifically regulating PIKK proteins (PMID: 37541219). GNB1L has 2 isoforms 36 kDa and 22 kDa, about 22 kDa which may be produced by Alternative splicing.

## Storage

### Storage:

Store at -20°C. Stable for one year after shipment.

### Storage Buffer:

PBS with 0.02% sodium azide and 50% glycerol pH 7.3.

Aliquoting is unnecessary for -20°C storage

\*\*\* 20ul sizes contain 0.1% BSA

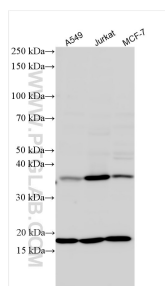
For technical support and original validation data for this product please contact:

T: 1 (888) 4PTGLAB (1-888-478-4522) (toll free in USA), or 1(312) 455-8498 (outside USA)

E: [proteintech@ptglab.com](mailto:proteintech@ptglab.com)  
W: [ptglab.com](http://ptglab.com)

This product is exclusively available under Proteintech Group brand and is not available to purchase from any other manufacturer.

## Selected Validation Data



Various lysates were subjected to SDS PAGE followed by western blot with 26484-1-AP (GNB1L antibody) at dilution of 1:1000 incubated at room temperature for 1.5 hours.