

For Research Use Only

# ZIP13 Polyclonal antibody

Catalog Number: 26496-1-AP



## Basic Information

Catalog Number:

26496-1-AP

Size:

150ul, Concentration: 1000 ug/ml by Nanodrop;

Source:

Rabbit

Isotype:

IgG

Immunogen Catalog Number:

AG24388

GenBank Accession Number:

BC008853

GeneID (NCBI):

91252

UNIPROT ID:

Q96H72

Full Name:

solute carrier family 39 (zinc transporter), member 13

Calculated MW:

371 aa, 39 kDa

Observed MW:

32 kDa

Purification Method:

Antigen affinity purification

Recommended Dilutions:

WB 1:1000-1:4000

## Applications

Tested Applications:

WB, ELISA

Species Specificity:

human, mouse, rat

Positive Controls:

WB : HeLa cells, mouse skeletal muscle tissue, rat skeletal muscle tissue

## Background Information

ZIP13, a member of the SLC39A/ZIP family, is mainly localized in the Golgi apparatus. It has been shown to play important roles in the development of bone, tooth and connective tissues. The apparent molecular weight of ZIP13 detected by SDS/PAGE was lower than its expected molecular mass (32 kDa), likely because of the largely hydrophobic nature of the protein, its high capacity to bind SDS, and, therefore, its more rapid migration during gel electrophoresis (PMID: 23213233).

## Storage

Storage:

Store at -20°C. Stable for one year after shipment.

Storage Buffer:

PBS with 0.02% sodium azide and 50% glycerol pH 7.3.

Aliquoting is unnecessary for -20°C storage

\*\*\* 20ul sizes contain 0.1% BSA

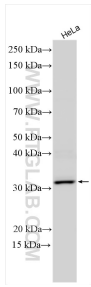
For technical support and original validation data for this product please contact:

T: 1 (888) 4PTGLAB (1-888-478-4522) (toll free in USA), or 1(312) 455-8498 (outside USA)

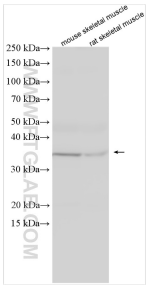
E: [proteintech@ptglab.com](mailto:proteintech@ptglab.com)  
W: [ptglab.com](http://ptglab.com)

This product is exclusively available under Proteintech Group brand and is not available to purchase from any other manufacturer.

# Selected Validation Data



Various lysates were subjected to SDS PAGE followed by western blot with 26496-1-AP (ZIP13 antibody) at dilution of 1:2000 incubated at room temperature for 1.5 hours.



Various lysates were subjected to SDS PAGE followed by western blot with 26496-1-AP (ZIP13 antibody) at dilution of 1:1500 incubated at room temperature for 1.5 hours.