

For Research Use Only

Anosmin-1 Polyclonal antibody

Catalog Number: 26504-1-AP



Basic Information

Catalog Number: 26504-1-AP	GenBank Accession Number: BC137426	Purification Method: Antigen affinity purification
Size: 150ul , Concentration: 1000 ug/ml by Nanodrop;	GeneID (NCBI): 3730	Recommended Dilutions: WB 1:500-1:1000
Source: Rabbit	UNIPROT ID: P23352	
Isotype: IgG	Full Name: Kallmann syndrome 1 sequence	
Immunogen Catalog Number: AG24188	Calculated MW: 680 aa, 76 kDa	
	Observed MW: 76 kDa	

Applications

Tested Applications: WB, ELISA	Positive Controls: WB : mouse testis tissue,
Species Specificity: human, mouse	

Background Information

Anosmin 1 is a secreted, EM associated glycoprotein found in humans and other organisms responsible for normal development, which is expressed in the brain, spinal cord and kidney. Absence or damage to the protein results in Kallmann syndrome in humans, which is characterized by loss of olfactory bulbs and GnRH secretion leading to anosmia and hypothalamic hypogonadotropic hypogonadism. Anosmin 1 is coded by the KAL-1 gene, which is found on the X chromosome.

Storage

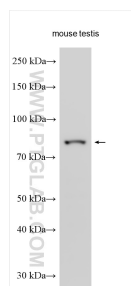
Storage:
Store at -20°C. Stable for one year after shipment.
Storage Buffer:
PBS with 0.02% sodium azide and 50% glycerol pH 7.3.
Aliquoting is unnecessary for -20°C storage

*** 20ul sizes contain 0.1% BSA

For technical support and original validation data for this product please contact:
T: 1 (888) 4PTGLAB (1-888-478-4522) (toll free in USA), or 1(312) 455-8498 (outside USA)
E: proteintech@ptglab.com
W: ptglab.com

This product is exclusively available under Proteintech Group brand and is not available to purchase from any other manufacturer.

Selected Validation Data



Various lysates were subjected to SDS PAGE followed by western blot with 26504-1-AP (KAL1 antibody) at dilution of 1:500 incubated at room temperature for 1.5 hours.