

For Research Use Only

C13orf1 Polyclonal antibody

Catalog Number: 26510-1-AP



Basic Information

Catalog Number: 26510-1-AP	GenBank Accession Number: BC022519	Purification Method: Antigen affinity purification
Size: 150ul , Concentration: 1000 ug/ml by Nanodrop and 333 ug/ml by Bradford method using BSA as the standard;	GeneID (NCBI): 57213	Recommended Dilutions: WB 1:500-1:1000 IHC 1:50-1:500 IF/ICC 1:200-1:800
Source: Rabbit	UNIPROT ID: Q5W111	
Isotype: IgG	Full Name: chromosome 13 open reading frame 1	
Immunogen Catalog Number: AG23487	Observed MW: 17 kDa, 20 kDa	

Applications

Tested Applications: WB, IHC, IF/ICC, ELISA	Positive Controls:
Species Specificity: human, mouse	WB : mouse brain tissue,
Note-IHC: suggested antigen retrieval with TE buffer pH 9.0; (*) Alternatively, antigen retrieval may be performed with citrate buffer pH 6.0	IHC : human lymphoma tissue,
	IF/ICC : PC-12 cells,

Background Information

C13orf1, also named as SPRYD7 and CLLD6, is involved in hematopoiesis via NOTCH signaling. C13orf1 plays an important role in the pathogenesis of B-CLL. There're some isoforms of C13orf1 with MW 15-17 kDa and 19-22 kDa.³

Storage

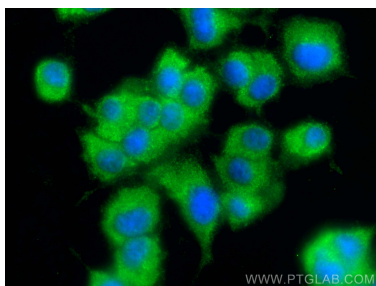
Storage:
Store at -20°C. Stable for one year after shipment.
Storage Buffer:
PBS with 0.02% sodium azide and 50% glycerol pH 7.3.
Aliquoting is unnecessary for -20°C storage

*** 20ul sizes contain 0.1% BSA

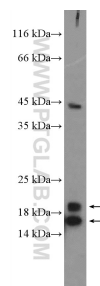
For technical support and original validation data for this product please contact:
T: 1 (888) 4PTGLAB (1-888-478-4522) (toll free in USA), or 1(312) 455-8498 (outside USA)
E: proteintech@ptglab.com
W: ptglab.com

This product is exclusively available under Proteintech Group brand and is not available to purchase from any other manufacturer.

Selected Validation Data



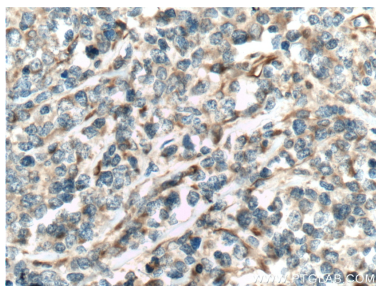
Immunofluorescent analysis of (-20°C Ethanol) fixed PC-12 cells using C13orf1 antibody (26510-1-AP) at dilution of 1:400 and CoraLite®488-Conjugated AffiniPure Goat Anti-Rabbit IgG(H+L) (SA00013-2).



mouse brain tissue were subjected to SDS PAGE followed by western blot with 26510-1-AP (C13orf1 Antibody) at dilution of 1:600 incubated at room temperature for 1.5 hours.



Immunohistochemical analysis of paraffin-embedded human lymphoma tissue slide using 26510-1-AP (C13orf1 Antibody) at dilution of 1:200 (under 10x lens). Heat mediated antigen retrieval with Tris-EDTA buffer (pH 9.0).



Immunohistochemical analysis of paraffin-embedded human lymphoma tissue slide using 26510-1-AP (C13orf1 Antibody) at dilution of 1:200 (under 40x lens). Heat mediated antigen retrieval with Tris-EDTA buffer (pH 9.0).