

For Research Use Only

# DEPDC7 Polyclonal antibody

Catalog Number: 26517-1-AP



## Basic Information

**Catalog Number:**

26517-1-AP

**Size:**

150ul , Concentration: 700 ug/ml by Nanodrop and 427 ug/ml by Bradford method using BSA as the standard;

**Source:**

Rabbit

**Isotype:**

IgG

**Immunogen Catalog Number:**

AG24094

**GenBank Accession Number:**

BC030970

**GeneID (NCBI):**

91614

**UNIPROT ID:**

Q96QD5

**Full Name:**

DEP domain containing 7

**Observed MW:**

55-60 kDa

**Purification Method:**

Antigen affinity purification

**Recommended Dilutions:**

WB 1:500-1:2000

## Applications

**Tested Applications:**

WB, ELISA

**Species Specificity:**

human

**Positive Controls:**

WB : HepG2 cells, HeLa cells

## Background Information

DEPDC7 (DEP domain-containing protein 7), also known as protein TR2/D15, is a 511 amino acid protein belonging to the DEPDC7 family. DEPDC7 contains one DEP domain and is highly expressed in liver, with lower levels in kidney. DEPDC7 exists as two isoforms produced by alternative splicing events. The gene encoding DEPDC7 maps to human chromosome 11p13 and mouse chromosome 2 E2. With approximately 135 million base pairs and 1,400 genes, chromosome 11 makes up around 4% of human genomic DNA and is considered a gene and disease association dense chromosome. DEPDC7 involves the regulation of small GTPase mediated signal transduction.

## Storage

**Storage:**

Store at -20°C. Stable for one year after shipment.

**Storage Buffer:**

PBS with 0.02% sodium azide and 50% glycerol pH 7.3.

Aliquoting is unnecessary for -20°C storage

\*\*\* 20ul sizes contain 0.1% BSA

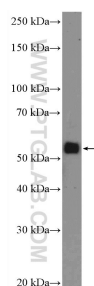
For technical support and original validation data for this product please contact:

T: 1 (888) 4PTGLAB (1-888-478-4522) (toll free in USA), or 1(312) 455-8498 (outside USA)

E: [proteintech@ptglab.com](mailto:proteintech@ptglab.com)  
W: [ptglab.com](http://ptglab.com)

This product is exclusively available under Proteintech Group brand and is not available to purchase from any other manufacturer.

## Selected Validation Data



HepG2 cells were subjected to SDS PAGE followed by western blot with 26517-1-AP (DEPDC7 Antibody) at dilution of 1:1000 incubated at room temperature for 1.5 hours.