

For Research Use Only

CLTC Polyclonal antibody

Catalog Number: 26523-1-AP

Featured Product

9 Publications



Basic Information

Catalog Number:

26523-1-AP

Size:

150ul, Concentration: 1000 ug/ml by Nanodrop;

Source:

Rabbit

Isotype:

IgG

Immunogen Catalog Number:

AG25041

GenBank Accession Number:

BC054489

GeneID (NCBI):

1213

UNIPROT ID:

Q00610

Full Name:

clathrin, heavy chain (Hc)

Calculated MW:

192 kDa

Observed MW:

180 kDa

Purification Method:

Antigen affinity purification

Recommended Dilutions:

WB 1:2000-1:10000

IP 0.5-4.0 ug for 1.0-3.0 mg of total protein lysate

IHC 1:500-1:2000

IF/ICC 1:250-1:1000

Applications

Tested Applications:

WB, IHC, IF/ICC, FC (Intra), IP, ELISA

Cited Applications:

WB, IF

Species Specificity:

human, mouse, rat, pig

Cited Species:

human, mouse, bovine

Note-IHC: suggested antigen retrieval with TE buffer pH 9.0; (*) Alternatively, antigen retrieval may be performed with citrate buffer pH 6.0

Positive Controls:

WB : HeLa cells, HL-60 cells, pig brain tissue, Raji cells, mouse brain tissue, rat brain tissue

IP : HeLa cells,

IHC : human colon tissue, human breast cancer tissue, human kidney tissue

IF/ICC : HepG2 cells, HeLa cells

Background Information

Clathrin is the major protein of the polyhedral coat of coated pits and vesicles which entrap specific macromolecules during receptor-mediated endocytosis. The clathrin molecule has a triskelion shape. Each clathrin triskelion is composed of three identical heavy chains (CLTC) (160-190 kDa) and three light chains of two types, LCA (CLTA) and LCB (CLTB) (30-40 kDa). The heavy chain provides the structural backbone of the clathrin lattice. (PMID: 9133677)

Notable Publications

Author	Pubmed ID	Journal	Application
Chunyan Li	35050860	Aging (Albany NY)	IF
Ashwinkumar Subramenium Ganapathy	34964704	Autophagy	WB
Koji Nishi	33373880	Vet Microbiol	WB,IF

Storage

Storage:

Store at -20°C. Stable for one year after shipment.

Storage Buffer:

PBS with 0.02% sodium azide and 50% glycerol pH 7.3.

Aliquoting is unnecessary for -20°C storage

*** 20ul sizes contain 0.1% BSA

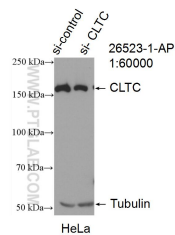
For technical support and original validation data for this product please contact:

T: 1 (888) 4PTGLAB (1-888-478-4522) (toll free in USA), or 1(312) 455-8498 (outside USA)

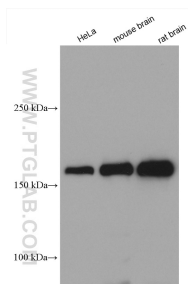
E: proteintech@ptglab.com
W: ptglab.com

This product is exclusively available under Proteintech Group brand and is not available to purchase from any other manufacturer.

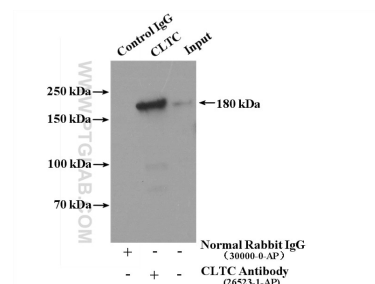
Selected Validation Data



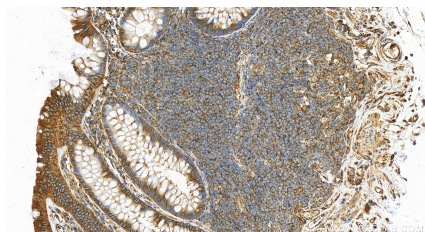
WB result of CLTC antibody (26523-1-AP; 1:60000; incubated at room temperature for 1.5 hours) with sh-Control and sh-CLTC transfected HeLa cells.



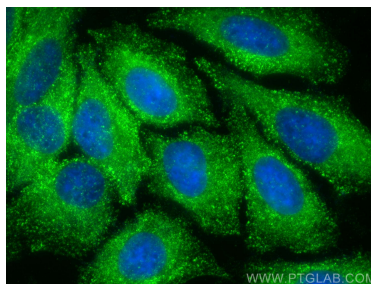
Various lysates were subjected to SDS PAGE followed by western blot with 26523-1-AP (CLTC antibody) at dilution of 1:5000 incubated at room temperature for 1.5 hours.



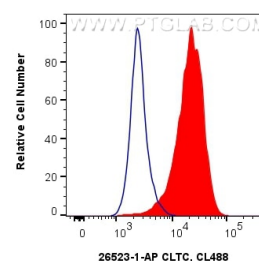
IP result of anti-CLTC (IP: 26523-1-AP, 4ug; Detection: 26523-1-AP 1:500) with HeLa cells lysate 2500ug.



Immunohistochemical analysis of paraffin-embedded human normal colon slide using 26523-1-AP (CLTC antibody) at dilution of 1:1000 (under 20x lens). Heat mediated antigen retrieval with Tris-EDTA buffer (pH 9.0).



Immunofluorescent analysis of (-20°C Ethanol) fixed HepG2 cells using CLTC antibody (26523-1-AP) at dilution of 1:500 and CoraLite®488-Conjugated AffiniPure Goat Anti-Rabbit IgG(H+L).



1X10⁶ HeLa cells were intracellularly stained with 0.4 ug Anti-Human CLTC (26523-1-AP) and CoraLite®488-Conjugated AffiniPure Goat Anti-Rabbit IgG(H+L) at dilution 1:1000 (red), or 0.4 ug Rabbit IgG control Rabbit PolyAb (30000-O-AP, Clone:) (blue). Cells were fixed with 4% PFA and permeabilized with Flow Cytometry Perm Buffer (PF00011-C).