

For Research Use Only

# MIP-3 Alpha Polyclonal antibody

Catalog Number: 26527-1-AP

8 Publications



## Basic Information

<b>Catalog Number:</b> 26527-1-AP	<b>GenBank Accession Number:</b> BC020698	<b>Purification Method:</b> Antigen affinity purification
<b>Size:</b> 150ul , Concentration: 550 µg/ml by Nanodrop and 300 µg/ml by Bradford method using BSA as the standard;	<b>GeneID (NCBI):</b> 6364	<b>Recommended Dilutions:</b> IHC 1:50-1:500
<b>Source:</b> Rabbit	<b>Full Name:</b> chemokine (C-C motif) ligand 20	
<b>Isotype:</b> IgG	<b>Calculated MW:</b> 11 kDa	
<b>Immunogen Catalog Number:</b> AG24069		

## Applications

<b>Tested Applications:</b> IHC, ELISA	<b>Positive Controls:</b> IHC : human lung cancer tissue, human pancreas cancer tissue, human tonsillitis tissue
<b>Cited Applications:</b> IF, IHC	
<b>Species Specificity:</b> human	
<b>Cited Species:</b> human, rat, mouse	
<b>Note-IHC: suggested antigen retrieval with TE buffer pH 9.0; (*) Alternatively, antigen retrieval may be performed with citrate buffer pH 6.0</b>	

## Background Information

CCL20, also known as macrophage infiltrating factor protein 3a, is a C-C chemokine that specifically binds to the receptor CCR6. CCL20 is produced in various tissues and by a wide range of immune cells, including neutrophils, natural killer cells, T-helper type 17 (Th17) cells, B cells, and various antigen-presenting cells, such as dendritic cells (DCs), Langerhans cells, and macrophages. Increased expression of CCL20 is likely involved in the increased recruitment of dendritic cells observed in fibroinflammatory diseases such as chronic obstructive pulmonary disease (COPD). CCL20 expression is increased by the proinflammatory cytokine IL-1 beta.

## Notable Publications

Author	Pubmed ID	Journal	Application
Chaochao Xu	34632963	Gut Microbes	IF
Anqi Li	32724395	Oncol Lett	IHC
Gaofeng Cai	35675749	Phytomedicine	

## Storage

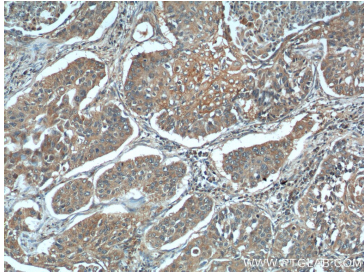
**Storage:**  
Store at -20°C. Stable for one year after shipment.  
**Storage Buffer:**  
PBS with 0.02% sodium azide and 50% glycerol pH 7.3.  
Aliquoting is unnecessary for -20°C storage

\*\*\* 20ul sizes contain 0.1% BSA

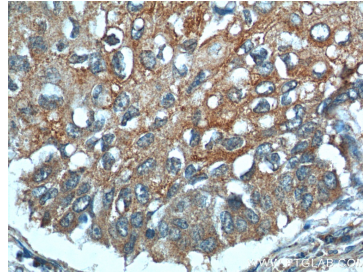
For technical support and original validation data for this product please contact:  
T: 1 (888) 4PTGLAB (1-888-478-4522) (toll free in USA), or 1(312) 455-8498 (outside USA)  
E: [proteintech@ptglab.com](mailto:proteintech@ptglab.com)  
W: [ptglab.com](http://ptglab.com)

This product is exclusively available under Proteintech Group brand and is not available to purchase from any other manufacturer.

## Selected Validation Data



Immunohistochemical analysis of paraffin-embedded human lung cancer tissue slide using 26527-1-AP (MIP-3 $\alpha$  Antibody) at dilution of 1:200 (under 10x lens).



Immunohistochemical analysis of paraffin-embedded human lung cancer tissue slide using 26527-1-AP (MIP-3 $\alpha$  Antibody) at dilution of 1:200 (under 40x lens).