

For Research Use Only

PPM1D Polyclonal antibody

Catalog Number: 26532-1-AP



Basic Information

Catalog Number: 26532-1-AP	GenBank Accession Number: BC060877	Purification Method: Antigen affinity purification
Size: 150ul , Concentration: 350 µg/ml by Nanodrop and 267 µg/ml by Bradford method using BSA as the standard;	GeneID (NCBI): 8493	Recommended Dilutions: WB 1:500-1:2000 IF 1:50-1:500
Source: Rabbit	Full Name: protein phosphatase 1D magnesium-dependent, delta isoform	
Isotype: IgG	Observed MW: 67 kDa	
Immunogen Catalog Number: AG24751		

Applications

Tested Applications: IF, WB, ELISA	Positive Controls:
Species Specificity: human, mouse, Rat	WB: MCF-7 cells, mouse lung tissue, rat testis tissue IF: MCF-7 cells,

Background Information

PPM1D (also known as PP2Cd and WIP1) is a member of the PPM family, which is characterized by Mg²⁺/Mn²⁺-dependent activity and relative insensitivity to okadaic acid. The PPM1D gene is aberrantly amplified in a range of common cancers and encodes a protein phosphatase that is a potential therapeutic target (PMID: 17700519). This antibody can be detected two bands of 47 and 67 Kda.

Storage

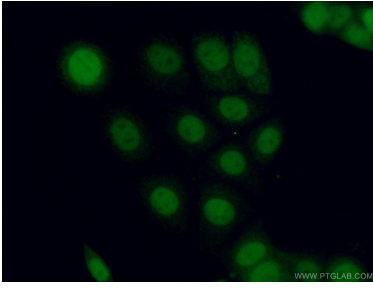
Storage:
Store at -20°C. Stable for one year after shipment.
Storage Buffer:
PBS with 0.02% sodium azide and 50% glycerol pH 7.3.
Aliquoting is unnecessary for -20°C storage

*** 20ul sizes contain 0.1% BSA

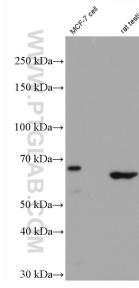
For technical support and original validation data for this product please contact:
T: 1 (888) 4PTGLAB (1-888-478-4522) (toll free in USA), or 1(312) 455-8498 (outside USA)
E: proteintech@ptglab.com
W: ptglab.com

This product is exclusively available under Proteintech Group brand and is not available to purchase from any other manufacturer.

Selected Validation Data



Immunofluorescent analysis of (4% PFA) fixed MCF-7 cells using 26532-1-AP (PPM1D antibody) at dilution of 1:50 and Alexa Fluor 488-conjugated AffiniPure Goat Anti-Rabbit IgG(H+L).



MCF-7 cells were subjected to SDS PAGE followed by western blot with 26532-1-AP (PPM1D antibody) at dilution of 1:1500 incubated at room temperature for 1.5 hours.