

For Research Use Only

Ephrin B2 Polyclonal antibody

Catalog Number: 26533-1-AP



Basic Information

Catalog Number:

26533-1-AP

Size:

150ul , Concentration: 400 ug/ml by Nanodrop;

Source:

Rabbit

Isotype:

IgG

Immunogen Catalog Number:

AG24865

GenBank Accession Number:

BC074856

GeneID (NCBI):

1948

UNIPROT ID:

P52799

Full Name:

ephrin-B2

Calculated MW:

333 aa, 37 kDa

Observed MW:

47-50 kDa

Purification Method:

Antigen affinity purification

Recommended Dilutions:

WB 1:1000-1:4000

IF/ICC 1:50-1:500

Applications

Tested Applications:

WB, IF/ICC, ELISA

Species Specificity:

human, mouse

Positive Controls:

WB : mouse lung tissue, mouse placenta tissue, mouse spleen tissue

IF/ICC : SH-SY5Y cells,

Background Information

Ephrin B2 (EFNB2) is a transmembrane ligand for the Ephrin B class (EPHB) of receptor tyrosine kinases. EPHB receptor (EPHB1-EPHB4, EPH6) are located at the member of one cell and activated by binding EFNB protein located on another cell, resulting in a bidirectional Ephrin-EphR signaling (PMID: 26790531). Ephrin-B are involved in vasculogenesis, neural development and synaptic plasticity, and in pathological processes such as cancer or neurodegeneration (PMID:29508392). The calculated molecular weight of EFNB2 is 37 kDa, and there is also detected about 50 kDa band in the article (PMID: 27650867, PMID: 23492730).

Storage

Storage:

Store at -20°C. Stable for one year after shipment.

Storage Buffer:

PBS with 0.02% sodium azide and 50% glycerol pH 7.3.

Aliquoting is unnecessary for -20°C storage

*** 20ul sizes contain 0.1% BSA

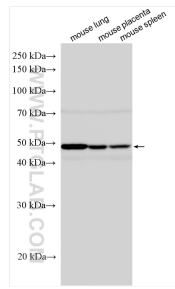
For technical support and original validation data for this product please contact:

T: 1 (888) 4PTGLAB (1-888-478-4522) (toll free in USA), or 1(312) 455-8498 (outside USA)

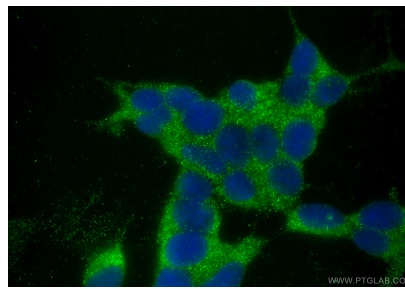
E: proteintech@ptglab.com
W: ptglab.com

This product is exclusively available under Proteintech Group brand and is not available to purchase from any other manufacturer.

Selected Validation Data



Various lysates were subjected to SDS PAGE followed by western blot with 26533-1-AP (Ephrin B2 antibody) at dilution of 1:2000 incubated at room temperature for 1.5 hours.



Immunofluorescent analysis of (-20°C Ethanol) fixed SH-SY5Y cells using Ephrin B2 antibody (26533-1-AP) at dilution of 1:200 and Multi-rAb CoraLite® Plus 488-Goat Anti-Rabbit Recombinant Secondary Antibody (H+L) (RGAR002).