

For Research Use Only

# PMPCA Polyclonal antibody

Catalog Number: 26536-1-AP **1 Publications**



## Basic Information

**Catalog Number:**

26536-1-AP

**Size:**

150ul, Concentration: 240 µg/ml by Nanodrop and 200 µg/ml by Bradford method using BSA as the standard;

**Source:**

Rabbit

**Isotype:**

IgG

**Immunogen Catalog Number:**

AG19206

**GenBank Accession Number:**

BC132724

**GeneID (NCBI):**

23203

**UNIPROT ID:**

Q10713

**Full Name:**

peptidase (mitochondrial processing)

alpha

**Calculated MW:**

525 aa, 58 kDa

**Observed MW:**

50-58 kDa

**Purification Method:**

Antigen affinity purification

**Recommended Dilutions:**

WB 1:500-1:2000

IP 0.5-4.0 ug for 1.0-3.0 mg of total protein lysate

IF 1:50-1:500

## Applications

**Tested Applications:**

IF, IP, WB, ELISA

**Cited Applications:**

WB

**Species Specificity:**

human

**Cited Species:**

human

**Positive Controls:**

WB : MDA-MB-453s cells, T-47D cells

IP : MDA-MB-453s cells,

IF : T-47D cells,

## Notable Publications

Author	Pubmed ID	Journal	Application
Yi Na Dong	30590615	Hum Mol Genet	WB

## Storage

**Storage:**

Store at -20°C. Stable for one year after shipment.

**Storage Buffer:**

PBS with 0.02% sodium azide and 50% glycerol pH 7.3.

Aliquoting is unnecessary for -20°C storage

\*\*\* 20ul sizes contain 0.1% BSA

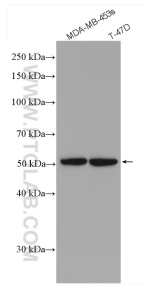
For technical support and original validation data for this product please contact:

T: 1 (888) 4PTGLAB (1-888-478-4522) (toll free in USA), or 1(312) 455-8498 (outside USA)

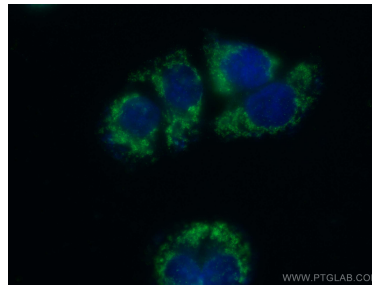
E: [proteintech@ptglab.com](mailto:proteintech@ptglab.com)  
W: [ptglab.com](http://ptglab.com)

This product is exclusively available under Proteintech Group brand and is not available to purchase from any other manufacturer.

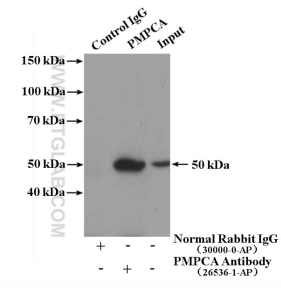
## Selected Validation Data



Various lysates were subjected to SDS PAGE followed by western blot with 26536-1-AP (PMPCA antibody) at dilution of 1:1000 incubated at room temperature for 1.5 hours.



Immunofluorescent analysis of (-20°C Ethanol) fixed T-47D cells using 26536-1-AP (PMPCA antibody), at dilution of 1:200 and CoraLite®488-Conjugated AffiniPure Goat Anti-Rabbit IgG(H+L).



IP result of anti-PMPCA (IP:26536-1-AP, 4ug; Detection:26536-1-AP 1:500) with MDA-MB-453s cells lysate 2800ug.