

For Research Use Only

XYLB Polyclonal antibody

Catalog Number: 26541-1-AP



Basic Information

Catalog Number: 26541-1-AP	GenBank Accession Number: BC137076	Purification Method: Antigen affinity purification
Size: 150ul , Concentration: 600 µg/ml by Nanodrop and 333 µg/ml by Bradford method using BSA as the standard;	GeneID (NCBI): 9942	Recommended Dilutions: WB 1:500-1:1000 IHC 1:100-1:400
Source: Rabbit	Full Name: xylulokinase homolog (H. influenzae)	
Isotype: IgG	Calculated MW: 536 aa, 58 kDa	
Immunogen Catalog Number: AG19208	Observed MW: 43 kDa	

Applications

Tested Applications: IHC, WB, ELISA	Positive Controls: WB : A431 cells, IHC : human skin cancer tissue,
Species Specificity: human	

Note-IHC: suggested antigen retrieval with TE buffer pH 9.0; (*) Alternatively, antigen retrieval may be performed with citrate buffer pH 6.0

Background Information

Human xylulokinase-like protein (XYLB), is a 58 kDa protein belongs to a family of enzymes that include fucokinase, gluconokinase, glycerokinase and xylulokinase. XYLB is a key regulator for controlling metabolic disease. XYLB also plays important roles in energy metabolism. XYLB has 2 isoforms produced by alternative splicing with the MW of 58 and 43 kDa.

Storage

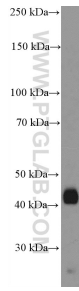
Storage:
Store at -20°C. Stable for one year after shipment.
Storage Buffer:
PBS with 0.02% sodium azide and 50% glycerol pH 7.3.
Aliquoting is unnecessary for -20°C storage

*** 20ul sizes contain 0.1% BSA

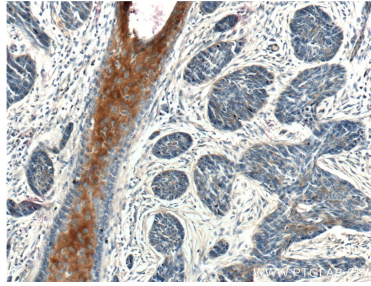
For technical support and original validation data for this product please contact:
T: 1 (888) 4PTGLAB (1-888-478-4522) (toll free in USA), or 1(312) 455-8498 (outside USA)
E: proteintech@ptglab.com
W: ptglab.com

This product is exclusively available under Proteintech Group brand and is not available to purchase from any other manufacturer.

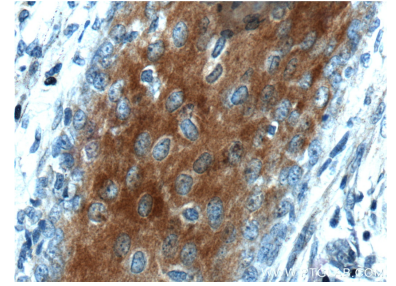
Selected Validation Data



A431 cells were subjected to SDS PAGE followed by western blot with 26541-1-AP (XYLB Antibody) at dilution of 1:600 incubated at room temperature for 1.5 hours.



Immunohistochemical analysis of paraffin-embedded human skin cancer tissue slide using 26541-1-AP (XYLB Antibody) at dilution of 1:200 (under 10x lens).



Immunohistochemical analysis of paraffin-embedded human skin cancer tissue slide using 26541-1-AP (XYLB Antibody) at dilution of 1:200 (under 40x lens).