

For Research Use Only

KLK4 Polyclonal antibody

Catalog Number: 26547-1-AP

1 Publications



Basic Information

Catalog Number:

26547-1-AP

Size:

150ul , Concentration: 1000 ug/ml by Nanodrop and 467 ug/ml by Bradford method using BSA as the standard;

Source:

Rabbit

Isotype:

IgG

Immunogen Catalog Number:

AG24240

GenBank Accession Number:

BC069325

GeneID (NCBI):

9622

UNIPROT ID:

Q9Y5K2

Full Name:

kallikrein-related peptidase 4

Calculated MW:

254 aa, 27 kDa

Observed MW:

30 kDa

Purification Method:

Antigen affinity purification

Recommended Dilutions:

IP 0.5-4.0 ug for 1.0-3.0 mg of total protein lysate
IHC 1:50-1:500

Applications

Tested Applications:

IP, IHC, ELISA

Cited Applications:

WB, IHC

Species Specificity:

human

Cited Species:

human

Note-IHC: suggested antigen retrieval with TE buffer pH 9.0; (*) Alternatively, antigen retrieval may be performed with citrate buffer pH 6.0

Positive Controls:

IP : DU 145 cells,

IHC : human prostate hyperplasia tissue,

Notable Publications

| Author | Pubmed ID | Journal | Application |
|-------------|-----------|-------------|-------------|
| Jingwen Shi | 37918799 | Am J Pathol | WB,IHC |

Storage

Storage:

Store at -20°C. Stable for one year after shipment.

Storage Buffer:

PBS with 0.02% sodium azide and 50% glycerol pH 7.3.

Aliquoting is unnecessary for -20°C storage

*** 20ul sizes contain 0.1% BSA

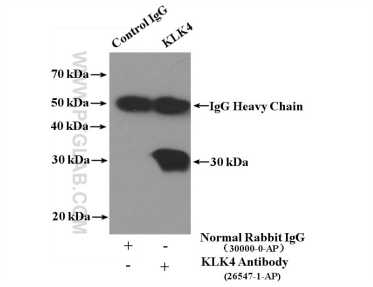
For technical support and original validation data for this product please contact:

T: 1 (888) 4PTGLAB (1-888-478-4522) (toll free in USA), or 1(312) 455-8498 (outside USA)

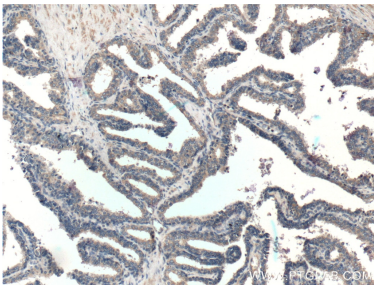
E: proteintech@ptglab.com
W: ptglab.com

This product is exclusively available under Proteintech Group brand and is not available to purchase from any other manufacturer.

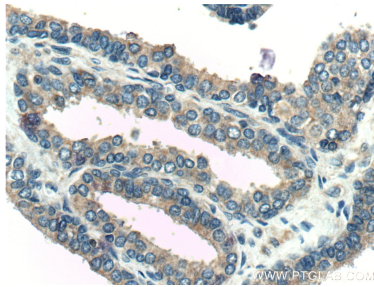
Selected Validation Data



IP result of anti-KLK4 (IP:26547-1-AP, 4ug; Detection:26547-1-AP 1:300) with DU 145 cells lysate 2200ug.



Immunohistochemical analysis of paraffin-embedded human prostate hyperplasia tissue slide using 26547-1-AP (KLK4 Antibody) at dilution of 1:200 (under 10x lens).



Immunohistochemical analysis of paraffin-embedded human prostate hyperplasia tissue slide using 26547-1-AP (KLK4 Antibody) at dilution of 1:200 (under 40x lens).