

For Research Use Only

Phospholipase C Beta 1 Polyclonal antibody



Catalog Number: 26551-1-AP

3 Publications

Basic Information

Catalog Number: 26551-1-AP	GenBank Accession Number: BC069420	Purification Method: Antigen affinity purification
Size: 150ul , Concentration: 700 µg/ml by Nanodrop and 333 µg/ml by Bradford method using BSA as the standard;	GeneID (NCBI): 23236	Recommended Dilutions: WB 1:500-1:2000 IHC 1:50-1:500
Source: Rabbit	Full Name: phospholipase C, beta 1 (phosphoinositide-specific)	
Isotype: IgG	Calculated MW: 1216 aa, 139 kDa	
Immunogen Catalog Number: AG24750	Observed MW: 139 kDa	

Applications

Tested Applications: IHC, WB, ELISA	Positive Controls:
Cited Applications: IHC, WB	WB : mouse brain tissue, rat brain tissue
Species Specificity: human, rat, mouse	IHC : human gliomas tissue, human breast cancer tissue
Cited Species: human	

Note-IHC: suggested antigen retrieval with TE buffer pH 9.0; (*) Alternatively, antigen retrieval may be performed with citrate buffer pH 6.0

Background Information

PLCB1 catalyzes the formation of inositol 1,4,5-trisphosphate and diacylglycerol from phosphatidylinositol 4,5-bisphosphate. This reaction uses calcium as a cofactor and plays an important role in the intracellular transduction of many extracellular signals. PLCB1 is activated by two G-protein alpha subunits, alpha-q and alpha-11.

Notable Publications

Author	Pubmed ID	Journal	Application
Linchong Sun	37500770	Nat Chem Biol	WB, IHC
Yulin Wang	37208557	Biochem Genet	WB
Luyun Zhang	37265700	Front Endocrinol (Lausanne)	WB

Storage

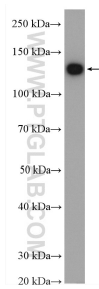
Storage:
Store at -20°C. Stable for one year after shipment.
Storage Buffer:
PBS with 0.02% sodium azide and 50% glycerol pH 7.3.
Aliquoting is unnecessary for -20°C storage

*** 20ul sizes contain 0.1% BSA

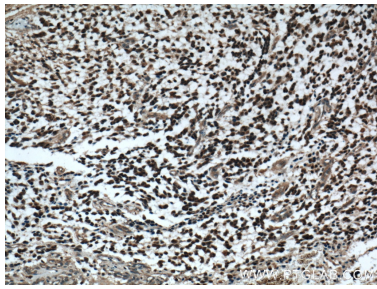
For technical support and original validation data for this product please contact:
T: 1 (888) 4PTGLAB (1-888-478-4522) (toll free in USA), or 1(312) 455-8498 (outside USA)
E: proteintech@ptglab.com
W: ptglab.com

This product is exclusively available under Proteintech Group brand and is not available to purchase from any other manufacturer.

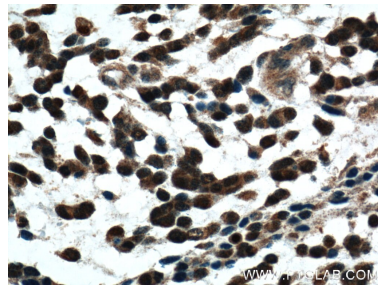
Selected Validation Data



mouse brain tissue were subjected to SDS PAGE followed by western blot with 26551-1-AP (Phospholipase C beta 1 antibody) at dilution of 1:1000 incubated at room temperature for 1.5 hours.



Immunohistochemical analysis of paraffin-embedded human gliomas tissue slide using 26551-1-AP (Phospholipase C beta 1 antibody at dilution of 1:200 (under 10x lens).



Immunohistochemical analysis of paraffin-embedded human gliomas tissue slide using 26551-1-AP (Phospholipase C beta 1 antibody at dilution of 1:200 (under 40x lens).