

For Research Use Only

ECT2 Polyclonal antibody

Catalog Number: 26557-1-AP



Basic Information

Catalog Number:

26557-1-AP

Size:

150ul , Concentration: 500 ug/ml by Nanodrop;

Source:

Rabbit

Isotype:

IgG

Immunogen Catalog Number:

AG24836

GenBank Accession Number:

BC112086

GeneID (NCBI):

1894

UNIPROT ID:

Q9H8V3

Full Name:

epithelial cell transforming sequence
2 oncogene

Observed MW:

100 kDa

Purification Method:

Antigen affinity purification

Recommended Dilutions:

WB 1:500-1:3000

IP 0.5-4.0 ug for 1.0-3.0 mg of total protein lysate

IF/ICC 1:200-1:800

Applications

Tested Applications:

WB, IF/ICC, FC (Intra), IP, ELISA

Species Specificity:

human

Positive Controls:

WB : A549 cells, HEK-293T cells, K-562 cells

IP : K-562 cells,

IF/ICC : A549 cells, NIH/3T3 cells

Background Information

Epithelial cell transforming sequence 2 (Ect2) is a guanine nucleotide exchange factor (GEF) for the Rho family GTPases, Rac1, RhoA and Cdc42. Ect2 catalyzes the exchange of GDP for GTP, thereby activating the Rho GTPases toward their downstream effectors (PMID: 35069543). The cellular localization of Ect2 is cell cycle dependent. Ect2 is localized predominantly in the nucleus during interphase due to two functional NLS sequences found within its central hinge region.¹ At the onset of mitosis, Ect2 is dispersed throughout the cytoplasm where it associates with the mitotic spindle at metaphase, the cleavage furrow during telophase, and the mid-body during cytokinesis (PMID: 35069543). Besides normal cellular activity, ECT2 also participates in malignant transformation, tumor initiation, and metastasis (PMID: 36572949).

Storage

Storage:

Store at -20°C. Stable for one year after shipment.

Storage Buffer:

PBS with 0.02% sodium azide and 50% glycerol pH 7.3.

Aliquoting is unnecessary for -20°C storage

*** 20ul sizes contain 0.1% BSA

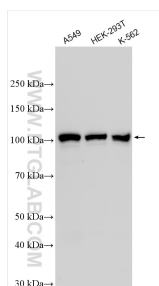
For technical support and original validation data for this product please contact:

T: 1 (888) 4PTGLAB (1-888-478-4522) (toll free in USA), or 1(312) 455-8498 (outside USA)

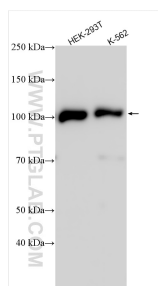
E: proteintech@ptglab.com
W: ptglab.com

This product is exclusively available under Proteintech Group brand and is not available to purchase from any other manufacturer.

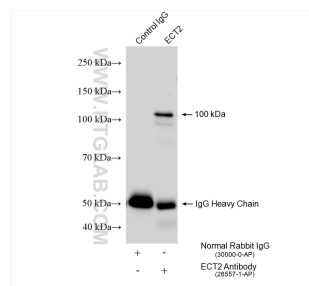
Selected Validation Data



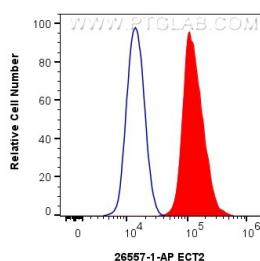
Various lysates were subjected to SDS PAGE followed by western blot with 26557-1-AP (ECT2 antibody) at dilution of 1:1500 incubated at room temperature for 1.5 hours.



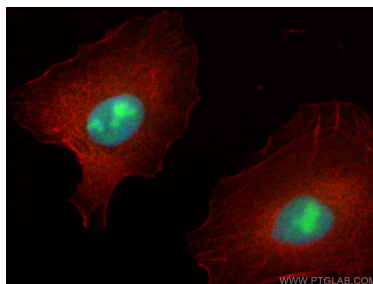
Various lysates were subjected to SDS PAGE followed by western blot with 26557-1-AP (ECT2 antibody) at dilution of 1:10000 incubated at room temperature for 1.5 hours.



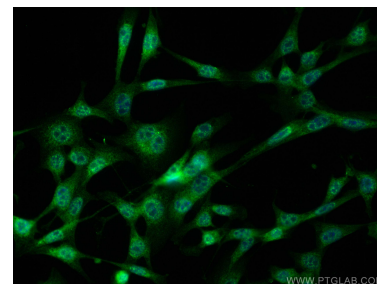
IP result of anti-ECT2 (IP:26557-1-AP, 4ug; Detection:26557-1-AP 1:6000) with K-562 cells lysate 2400 ug.



1x10⁶ A549 cells were intracellularly stained with 0.25 ug ECT2 Polyclonal antibody (26557-1-AP) and CoraLite®488-Conjugated Goat Anti-Rabbit IgG(H+L) (SA00013-2)(red), or 0.25 ug Rabbit IgG control Rabbit PolyAb (30000-O-AP) (blue). Cells were fixed and permeabilized with Transcription Factor Staining Buffer Kit (PF00011).



Immunofluorescent analysis of (4% PFA) fixed A549 cells using ECT2 antibody (26557-1-AP) at dilution of 1:400 and CoraLite®488-Conjugated AffiniPure Goat Anti-Rabbit IgG(H+L) (SA00013-2), CL594-phalloidin (red).



Immunofluorescent analysis of (4% PFA) fixed NIH/3T3 cells using ECT2 antibody (26557-1-AP) at dilution of 1:400 and CoraLite®488-Conjugated AffiniPure Goat Anti-Rabbit IgG(H+L) (SA00013-2).