

For Research Use Only

# SERPINB3/4 Polyclonal antibody

Catalog Number: 26558-1-AP

Featured Product

3 Publications



## Basic Information

### Catalog Number:

26558-1-AP

### Size:

150ul, Concentration: 300 ug/ml by Nanodrop and 233 ug/ml by Bradford method using BSA as the standard;

### Source:

Rabbit

### Isotype:

IgG

### Immunogen Catalog Number:

AG24846

### GenBank Accession Number:

BC005224

### GeneID (NCBI):

6317

### UNIPROT ID:

P29508

### Full Name:

serpin peptidase inhibitor, clade B (ovalbumin), member 3

### Calculated MW:

390 aa, 45 kDa

### Observed MW:

45 kDa

### Purification Method:

Antigen affinity purification

### Recommended Dilutions:

WB 1:500-1:1000

IHC 1:50-1:500

## Applications

### Tested Applications:

WB, IHC, ELISA

### Cited Applications:

WB, IHC, IF

### Species Specificity:

human

### Cited Species:

human

**Note-IHC: suggested antigen retrieval with TE buffer pH 9.0; (\*) Alternatively, antigen retrieval may be performed with citrate buffer pH 6.0**

### Positive Controls:

**WB** : HeLa cells, human saliva tissue, L02 cells, HepG2 cells

**IHC** : human intrahepatic cholangiocarcinoma tissue,

## Background Information

Squamous cell carcinoma antigens 1 and 2 (SCCA1 and 2, SERPIN B3 and B4) are members of the ovalbumin family of serine proteinase inhibitors. SCCA1 and SCCA2 are highly homologous proteins, 91% identical at the amino acid level, and probably evolving from a common ancestor gene. The neutral form of SCCA (SCCA1, or SERPINB3) is detected in the cytoplasm of normal and some malignant squamous cells, whereas the acidic form (SCCA2, or SERPINB4) is expressed primarily in malignant cells and is the major form found in the plasma of cancer patients. SCCA2 (SERPINB4), along with SCCA1 (SERPINB3), can be processed into smaller fragments that aggregate to form an autoantigen in psoriasis, probably by causing chronic inflammation. This antibody can recognize both SerpinB3 and SerpinB4.

## Notable Publications

Author	Pubmed ID	Journal	Application
Erbao Bian	34696771	J Exp Clin Cancer Res	WB,IF
Zixian Huang	36382555	Adv Sci (Weinh)	WB,IHC,IF
Kuen-Yao Ho	32569142	Otol Neurotol	WB

## Storage

### Storage:

Store at -20°C. Stable for one year after shipment.

### Storage Buffer:

PBS with 0.02% sodium azide and 50% glycerol pH 7.3.

Aliquoting is unnecessary for -20°C storage

\*\*\* 20ul sizes contain 0.1% BSA

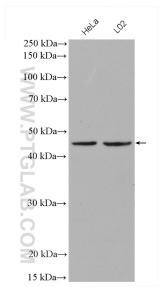
For technical support and original validation data for this product please contact:

T: 1 (888) 4PTGLAB (1-888-478-4522) (toll free in USA), or 1(312) 455-8498 (outside USA)

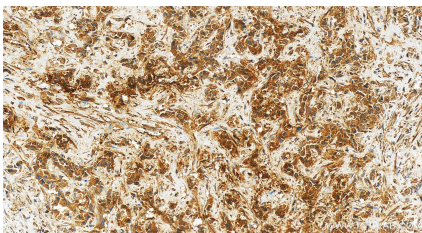
E: [proteintech@ptglab.com](mailto:proteintech@ptglab.com)  
W: [ptglab.com](http://ptglab.com)

**This product is exclusively available under Proteintech Group brand and is not available to purchase from any other manufacturer.**

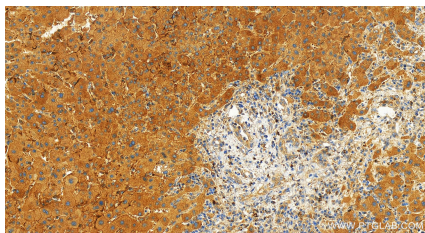
## Selected Validation Data



HeLa cells were subjected to SDS PAGE followed by western blot with 26558-1-AP (SERPINB3/4 antibody) at dilution of 1:500 incubated at room temperature for 1.5 hours.



Immunohistochemical analysis of paraffin-embedded human intrahepatic cholangiocarcinoma tissue slide using 26558-1-AP (SERPINB3/4 antibody) at dilution of 1:100 (under 20x lens). Heat mediated antigen retrieval with Tris-EDTA buffer (pH 9.0).



Immunohistochemical analysis of paraffin-embedded human intrahepatic cholangiocarcinoma tissue slide using 26558-1-AP (SERPINB3/4 antibody) at dilution of 1:100 (under 20x lens). Heat mediated antigen retrieval with Tris-EDTA buffer (pH 9.0).