

For Research Use Only

# CMTM4 Polyclonal antibody

Catalog Number: 26559-1-AP



## Basic Information

<b>Catalog Number:</b> 26559-1-AP	<b>GenBank Accession Number:</b> BC093679	<b>Purification Method:</b> Antigen affinity purification
<b>Size:</b> 150ul , Concentration: 850 µg/ml by Nanodrop;	<b>GeneID (NCBI):</b> 146223	<b>Recommended Dilutions:</b> WB 1:1000-1:4000
<b>Source:</b> Rabbit	<b>Full Name:</b> CKLF-like MARVEL transmembrane domain containing 4	
<b>Isotype:</b> IgG		
<b>Immunogen Catalog Number:</b> AG23648		

## Applications

<b>Tested Applications:</b> WB, ELISA	<b>Positive Controls:</b> WB : mouse brain tissue, rat brain tissue
<b>Species Specificity:</b> human, Mouse, Rat	

## Background Information

CMTM4 belongs to the CKLF-like MARVEL transmembrane domain containing (CMTM) family which contain a structurally conserved MAL and related proteins for vesicle trafficking and membrane linking (MARVEL) domain (PMID: 32944388). CMTM4 plays an important role in mediating endothelial barrier function and controlling vascular sprouting (PMID: 30097810). CMTM4 has been reported to be the major regulator of PD-L1 in liver cancer (PMID: 34558800) and play a tumor suppressive role in colorectal cancer (PMID: 31435638).

## Storage

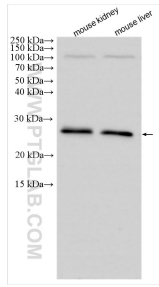
**Storage:**  
Store at -20°C. Stable for one year after shipment.  
**Storage Buffer:**  
PBS with 0.02% sodium azide and 50% glycerol pH 7.3.  
Aliquoting is unnecessary for -20°C storage

\*\*\* 20ul sizes contain 0.1% BSA

For technical support and original validation data for this product please contact:  
T: 1 (888) 4PTGLAB (1-888-478-4522) (toll free in USA), or 1(312) 455-8498 (outside USA) E: proteintech@ptglab.com W: ptglab.com

This product is exclusively available under Proteintech Group brand and is not available to purchase from any other manufacturer.

## Selected Validation Data



Various lysates were subjected to SDS PAGE followed by western blot with 26559-1-AP (CMTM4 antibody) at dilution of 1:2000 incubated at room temperature for 1.5 hours.