

For Research Use Only

LIMCH1 Polyclonal antibody

Catalog Number: 26561-1-AP



Basic Information

Catalog Number: 26561-1-AP	GenBank Accession Number: BC023546	Purification Method: Antigen affinity purification
Size: 150ul , Concentration: 750 ug/ml by Nanodrop;	GeneID (NCBI): 22998	Recommended Dilutions: WB 1:2000-1:12000 IHC 1:500-1:2000
Source: Rabbit	UNIPROT ID: Q9UPQ0	
Isotype: IgG	Full Name: LIM and calponin homology domains 1	
Immunogen Catalog Number: AG24112	Observed MW: ~150 kDa	

Applications

Tested Applications: WB, IHC, ELISA	Positive Controls:
Species Specificity: human	WB : HeLa cells, mouse brain tissue
Note-IHC: suggested antigen retrieval with TE buffer pH 9.0; (*) Alternatively, antigen retrieval may be performed with citrate buffer pH 6.0	IHC : human intrahepatic cholangiocarcinoma tissue,

Background Information

LIM and calponin-homology domains 1 (LIMCH1) was identified from a border cell migration screen based on conditional ectopic expression in Drosophila. It's a kind of actin stress fibers-associated protein that activates non-muscle myosin IIa. Through the activation of non-muscle myosin IIa, LIMCH1 positively regulates actin stress fibers assembly and stabilizes focal adhesions, negatively regulates cell spreading and cell migration.

Storage

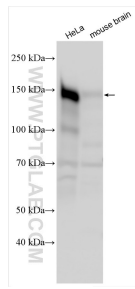
Storage:
Store at -20°C. Stable for one year after shipment.
Storage Buffer:
PBS with 0.02% sodium azide and 50% glycerol pH 7.3.
Aliquoting is unnecessary for -20°C storage

*** 20ul sizes contain 0.1% BSA

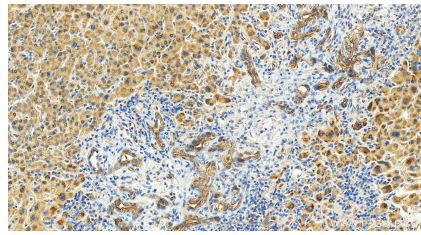
For technical support and original validation data for this product please contact:
T: 1 (888) 4PTGLAB (1-888-478-4522) (toll free in USA), or 1(312) 455-8498 (outside USA)
E: proteintech@ptglab.com
W: ptglab.com

This product is exclusively available under Proteintech Group brand and is not available to purchase from any other manufacturer.

Selected Validation Data



Various lysates were subjected to SDS PAGE followed by western blot with 26561-1-AP (LIMCH1 antibody) at dilution of 1:6000 incubated at room temperature for 1.5 hours.



Immunohistochemical analysis of paraffin-embedded human intrahepatic cholangiocarcinoma tissue slide using 26561-1-AP (LIMCH1 antibody) at dilution of 1:1000 (under 20x lens). Heat mediated antigen retrieval with Tris-EDTA buffer (pH 9.0).