

For Research Use Only

EHHADH Polyclonal antibody

Catalog Number: 26570-1-AP

6 Publications



Basic Information

Catalog Number:

26570-1-AP

Size:

150ul, Concentration: 900 ug/ml by Nanodrop and 287 ug/ml by Bradford method using BSA as the standard;

Source:

Rabbit

Isotype:

IgG

Immunogen Catalog Number:

AG24237

GenBank Accession Number:

BC038948

GeneID (NCBI):

1962

UNIPROT ID:

Q08426

Full Name:

enoyl-Coenzyme A, hydratase/3-hydroxyacyl Coenzyme A dehydrogenase

Calculated MW:

723 aa, 79 kDa

Observed MW:

69 kDa

Purification Method:

Antigen affinity purification

Recommended Dilutions:

WB 1:1000-1:6000

IHC 1:100-1:400

IF/ICC 1:20-1:200

Applications

Tested Applications:

WB, IHC, IF/ICC, ELISA

Cited Applications:

WB

Species Specificity:

human, mouse, rat

Cited Species:

mouse

Note-IHC: suggested antigen retrieval with TE buffer pH 9.0; (*) Alternatively, antigen retrieval may be performed with citrate buffer pH 6.0

Positive Controls:

WB: mouse kidney tissue, SMMC-7721 cells, HepG2 cells, mouse liver tissue, rat kidney tissue

IHC: human liver cancer tissue,

IF/ICC: HepG2 cells,

Notable Publications

Author	Pubmed ID	Journal	Application
Yingli Zhu	36613632	Int J Mol Sci	WB
Tomoki Yagai	34380035	Cell Rep	WB
Ziling Zhang	38734232	Int J Biochem Cell Biol	WB

Storage

Storage:

Store at -20°C. Stable for one year after shipment.

Storage Buffer:

PBS with 0.02% sodium azide and 50% glycerol pH 7.3.

Aliquoting is unnecessary for -20°C storage

*** 20ul sizes contain 0.1% BSA

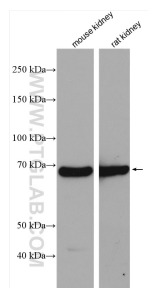
For technical support and original validation data for this product please contact:

T: 1 (888) 4PTGLAB (1-888-478-4522) (toll free in USA), or 1(312) 455-8498 (outside USA)

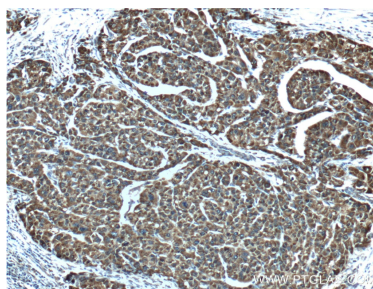
E: proteintech@ptglab.com
W: ptglab.com

This product is exclusively available under Proteintech Group brand and is not available to purchase from any other manufacturer.

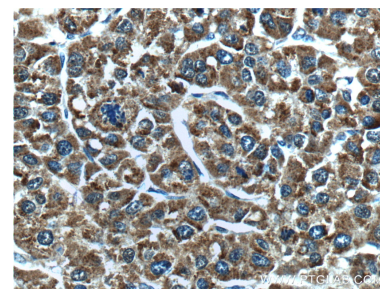
Selected Validation Data



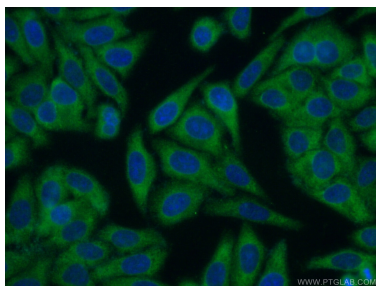
Various lysates were subjected to SDS PAGE followed by western blot with 26570-1-AP (EHHADH antibody) at dilution of 1:4000 incubated at room temperature for 1.5 hours.



Immunohistochemical analysis of paraffin-embedded human liver cancer tissue slide using 26570-1-AP (EHHADH Antibody) at dilution of 1:200 (under 10x lens).



Immunohistochemical analysis of paraffin-embedded human liver cancer tissue slide using 26570-1-AP (EHHADH Antibody) at dilution of 1:200 (under 40x lens).



Immunofluorescent analysis of (-20°C Ethanol) fixed HepG2 cells using 26570-1-AP (EHHADH antibody) at dilution of 1:50 and Alexa Fluor 488-conjugated Goat Anti-Rabbit IgG(H+L).