

For Research Use Only

SCF Polyclonal antibody

Catalog Number: 26582-1-AP

Featured Product

11 Publications



Basic Information

Catalog Number:

26582-1-AP

Size:

150ul, Concentration: 900 ug/ml by Nanodrop;

Source:

Rabbit

Isotype:

IgG

Immunogen Catalog Number:

AG25075

GenBank Accession Number:

BC074725

GeneID (NCBI):

4254

UNIPROT ID:

P21583

Full Name:

KIT ligand

Calculated MW:

273 aa, 31 kDa

Observed MW:

30-45 kDa

Purification Method:

Antigen affinity purification

Recommended Dilutions:

WB 1:500-1:1000

IHC 1:50-1:500

Applications

Tested Applications:

WB, IHC, FC (Intra), ELISA

Cited Applications:

WB, IHC

Species Specificity:

human, mouse, rat

Cited Species:

human, mouse, rat

Note-IHC: suggested antigen retrieval with TE buffer pH 9.0; (*) Alternatively, antigen retrieval may be performed with citrate buffer pH 6.0

Positive Controls:

WB: PC-12 cells, NIH/3T3 cells, mouse colon tissue

IHC: human kidney tissue, human small intestine tissue, human colon tissue

Background Information

Stem cell factor (SCF) also known as mast cell growth factor, steel factor, and kit ligand, is a hematopoietic growth factor. SCF is a critical protein with key roles in the cell such as hematopoiesis, gametogenesis and melanogenesis. SCF activates multiple signal pathways by binding with c-kit receptor. SCF and its receptor, c-kit ligand (KL), are up-regulated in particular human malignancies including gastrointestinal stromal tumor (GISTs), breast cancer, hematopoietic cell, myeloid leukaemia, and glioma. The SCF/c-KIT system also plays a relevant role in cell fate decision, and its activity is widely known to control cell proliferation, differentiation, survival and apoptosis. SCF is a 35 to 45 kDa monomeric glycoprotein.

Notable Publications

Author	Pubmed ID	Journal	Application
Ichita Kinoshita	34884420	Int J Mol Sci	IHC
Zhaoyu Yang	32463597	Thorac Cancer	WB
Lu Ding	33973702	Chem Biodivers	WB

Storage

Storage:

Store at -20°C. Stable for one year after shipment.

Storage Buffer:

PBS with 0.02% sodium azide and 50% glycerol pH 7.3.

Aliquoting is unnecessary for -20°C storage

*** 20ul sizes contain 0.1% BSA

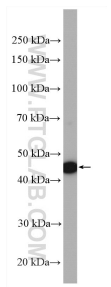
For technical support and original validation data for this product please contact:

T: 1 (888) 4PTGLAB (1-888-478-4522) (toll free in USA), or 1(312) 455-8498 (outside USA)

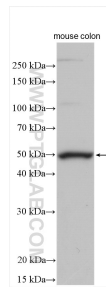
E: proteintech@ptglab.com
W: ptglab.com

This product is exclusively available under Proteintech Group brand and is not available to purchase from any other manufacturer.

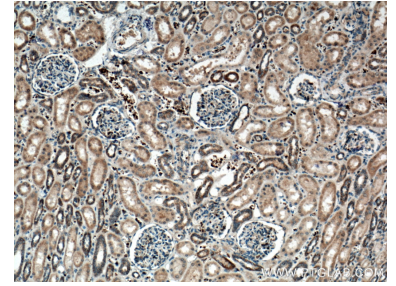
Selected Validation Data



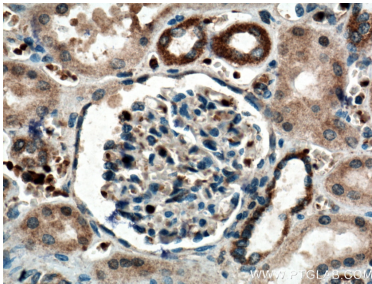
PC-12 cells were subjected to SDS PAGE followed by western blot with 26582-1-AP (SCF antibody) at dilution of 1:600 incubated at room temperature for 1.5 hours.



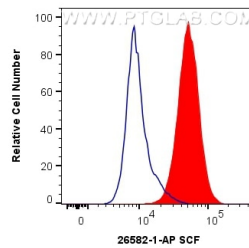
mouse colon tissue were subjected to SDS PAGE followed by western blot with 26582-1-AP (SCF antibody) at dilution of 1:1500 incubated at room temperature for 1.5 hours.



Immunohistochemical analysis of paraffin-embedded human kidney tissue slide using 26582-1-AP (SCF antibody) at dilution of 1:200 (under 10x lens. Heat mediated antigen retrieval with Tris-EDTA buffer (pH 9.0).



Immunohistochemical analysis of paraffin-embedded human kidney tissue slide using 26582-1-AP (SCF antibody) at dilution of 1:200 (under 40x lens. Heat mediated antigen retrieval with Tris-EDTA buffer (pH 9.0).



1X10⁶ MCF-7 cells were intracellularly stained with 0.4 ug Anti-Human SCF (26582-1-AP) and CoraLite®488-Conjugated Goat Anti-Rabbit IgG(H+L) at dilution 1:1000 (red), or 0.4 ug Control Antibody. Cells were fixed with 4% PFA and permeabilized with Flow Cytometry Perm Buffer (PF00011-C).