

For Research Use Only

# MMP1 Polyclonal antibody

Catalog Number: 26585-1-AP

4 Publications



## Basic Information

### Catalog Number:

26585-1-AP

### Size:

150ul, Concentration: 450 ug/ml by Nanodrop and 367 ug/ml by Bradford method using BSA as the standard;

### Source:

Rabbit

### Isotype:

IgG

### Immunogen Catalog Number:

AG25073

### GenBank Accession Number:

BC013875

### GeneID (NCBI):

4312

### UNIPROT ID:

P03956

### Full Name:

matrix metalloproteinase 1 (interstitial collagenase)

### Calculated MW:

54 kDa

### Observed MW:

62 kDa

### Purification Method:

Antigen affinity purification

### Recommended Dilutions:

WB 1:200-1:1000

IP 0.5-4.0 ug for 1.0-3.0 mg of total protein lysate

IHC 1:100-1:400

## Applications

### Tested Applications:

WB, IP, IHC, ELISA

### Cited Applications:

WB, IHC, IP

### Species Specificity:

human, mouse

### Cited Species:

human, mouse, rat

### Positive Controls:

WB : A375 cells, NIH/3T3 cells

IP : Raji cells,

IHC : human cervical cancer tissue, human liver cancer tissue

**Note-IHC: suggested antigen retrieval with TE buffer pH 9.0; (\*) Alternatively, antigen retrieval may be performed with citrate buffer pH 6.0**

## Background Information

MMP1, also named as CLG, belongs to the peptidase M10A family. MMP is the main enzyme that cleaves fibrillar collagen, namely types I, II, III, VII, and XI. It is involved in cell migration and invasion, and is frequently up-regulated in cancer cells. It can be cleavage to two major forms (22 kDa and 27 kDa) by undergoing autolytic, and the minor form (25 kDa) is the glycosylated form of the 22 kDa form. The 27 kDa form has no activity while the 22/25 kDa form can act as activator for collagenase. The sizes of pro-MMP-1 and active MMP-1 from human synovial fibroblasts have been reported as 52 to 56 kDa, depending on glycosylation, and 41 to 45 kDa, respectively. In addition, a band of 62-kDa observed in the current study is pro-MMP-1 (PMID:9418730).

## Notable Publications

Author	Pubmed ID	Journal	Application
Haiquan Zhu	34093648	Front Genet	WB
Li Zeng	28447732	Mol Med Rep	
Yihui Zhu	35254603	Breast Cancer Res Treat	WB, IHC, IP

## Storage

### Storage:

Store at -20°C. Stable for one year after shipment.

### Storage Buffer:

PBS with 0.02% sodium azide and 50% glycerol pH 7.3.

Aliquoting is unnecessary for -20°C storage

\*\*\* 20ul sizes contain 0.1% BSA

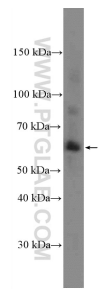
For technical support and original validation data for this product please contact:

T: 1 (888) 4PTGLAB (1-888-478-4522) (toll free in USA), or 1(312) 455-8498 (outside USA)

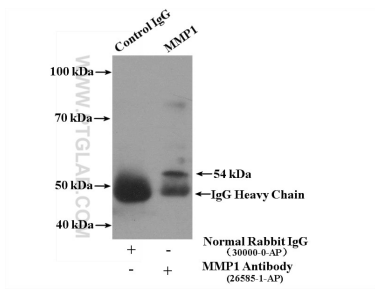
E: proteintech@ptglab.com  
W: ptglab.com

This product is exclusively available under Proteintech Group brand and is not available to purchase from any other manufacturer.

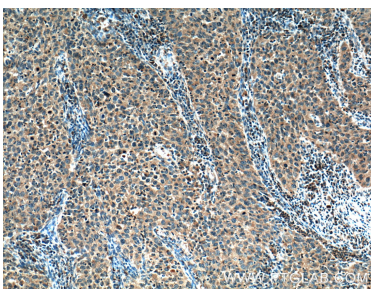
Selected Validation Data



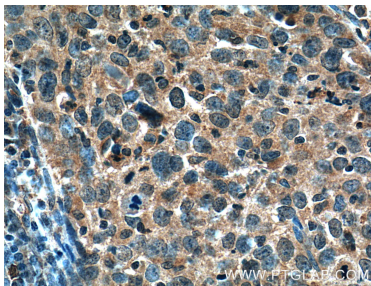
A375 cells were subjected to SDS PAGE followed by western blot with 26585-1-AP (MMP1 Antibody) at dilution of 1:300 incubated at room temperature for 1.5 hours.



IP result of anti-MMP1 (IP:26585-1-AP, 4ug; Detection:26585-1-AP 1:300) with Raji cells lysate 4000ug.



Immunohistochemical analysis of paraffin-embedded human cervical cancer tissue slide using 26585-1-AP (MMP1 Antibody) at dilution of 1:200 (under 10x lens). Heat mediated antigen retrieval with Tris-EDTA buffer (pH 9.0).



Immunohistochemical analysis of paraffin-embedded human cervical cancer tissue slide using 26585-1-AP (MMP1 Antibody) at dilution of 1:200 (under 40x lens). Heat mediated antigen retrieval with Tris-EDTA buffer (pH 9.0).