

For Research Use Only

OTX1 Polyclonal antibody

Catalog Number: 26595-1-AP

Featured Product



Basic Information

Catalog Number: 26595-1-AP	GenBank Accession Number: BC007621	Purification Method: Antigen affinity purification
Size: 150ul , Concentration: 1000 µg/ml by Nanodrop and 433 µg/ml by Bradford method using BSA as the standard;	GeneID (NCBI): 5013	Recommended Dilutions: WB 1:500-1:1000
Source: Rabbit	Full Name: orthodenticle homeobox 1	
Isotype: IgG	Calculated MW: 37 kDa	
Immunogen Catalog Number: AG24252	Observed MW: 37-43 kDa	

Applications

Tested Applications: WB, ELISA	Positive Controls: WB : COLO 320 cells, HEK-293 cells
Species Specificity: human	

Background Information

OTX1, also named as Orthodenticle homolog 1, is a 354 amino acid protein, which belongs to the paired homeobox family. OTX1 is expressed in brain and detected in the anterior part of the neural fetal retina. OTX1 probably plays a role in the development of the brain and the sense organs.

Storage

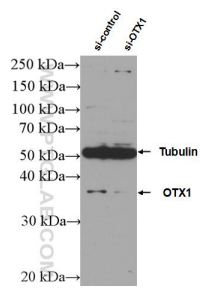
Storage:
Store at -20°C. Stable for one year after shipment.
Storage Buffer:
PBS with 0.02% sodium azide and 50% glycerol pH 7.3.
Aliquoting is unnecessary for -20°C storage

*** 20ul sizes contain 0.1% BSA

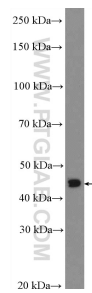
For technical support and original validation data for this product please contact:
T: 1 (888) 4PTGLAB (1-888-478-4522) (toll free in USA), or 1(312) 455-8498 (outside USA) E: proteintech@ptglab.com W: ptglab.com

This product is exclusively available under Proteintech Group brand and is not available to purchase from any other manufacturer.

Selected Validation Data



WB result of OTX1 antibody (26595-1-AP; 1:600; incubated at room temperature for 1.5 hours) with sh-Control and sh-OTX1 transfected HEK-293 cells.



COLO 320 cells were subjected to SDS PAGE followed by western blot with 26595-1-AP (OTX1 Antibody) at dilution of 1:600 incubated at room temperature for 1.5 hours.