

For Research Use Only

# CRB1 Polyclonal antibody

Catalog Number: 26598-1-AP



## Basic Information

<b>Catalog Number:</b> 26598-1-AP	<b>GenBank Accession Number:</b> BC136271	<b>Purification Method:</b> Antigen affinity purification
<b>Size:</b> 150ul, Concentration: 800 µg/ml by Nanodrop;	<b>GeneID (NCBI):</b> 23418	<b>Recommended Dilutions:</b> IHC 1:50-1:500 IF 1:400-1:1600
<b>Source:</b> Rabbit	<b>UNIPROT ID:</b> P82279	
<b>Isotype:</b> IgG	<b>Full Name:</b> crumbs homolog 1 (Drosophila)	
<b>Immunogen Catalog Number:</b> AG24512	<b>Calculated MW:</b> 1406 aa, 154 kDa	
	<b>Observed MW:</b> 150 kDa	

## Applications

<b>Tested Applications:</b> IF, IHC, ELISA	<b>Positive Controls:</b> IHC : mouse eye tissue, mouse brain tissue IF : SH-SY5Y cells,
<b>Species Specificity:</b> mouse, human	
<b>Note-IHC: suggested antigen retrieval with TE buffer pH 9.0; (*) Alternatively, antigen retrieval may be performed with citrate buffer pH 6.0</b>	

## Background Information

CRB1, also known as protein crumbs homolog 1, is homologous to Drosophila Crumbs, a protein that is essential for establishing and maintaining apico-basal polarity in epithelia derived from the ectoderm (PMID: 2344615). CRB1 protein is a single transmembrane protein with a large extracellular part, containing three laminin A G domains and 19 epidermal growth-factor-like domains (PMID: 15494026, 18407265, 11734541). The expression of CRB1 is restricted to the retina and brain (PMID: 10508521). Mutations in CRB1 gene cause severe retinal dystrophies, ranging from retinitis pigmentosa (RP) to Leber congenital amaurosis (LCA) (PMID: 11734541).

## Storage

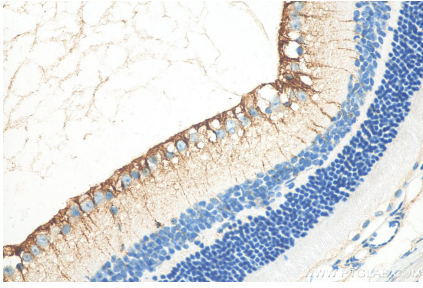
**Storage:**  
Store at -20°C. Stable for one year after shipment.  
**Storage Buffer:**  
PBS with 0.02% sodium azide and 50% glycerol pH 7.3.  
Aliquoting is unnecessary for -20°C storage

\*\*\* 20ul sizes contain 0.1% BSA

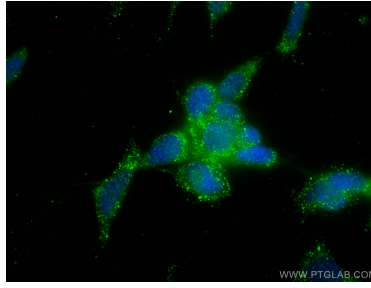
For technical support and original validation data for this product please contact:  
T: 1 (888) 4PTGLAB (1-888-478-4522) (toll free in USA), or 1(312) 455-8498 (outside USA)  
E: proteintech@ptglab.com  
W: ptglab.com

This product is exclusively available under Proteintech Group brand and is not available to purchase from any other manufacturer.

## Selected Validation Data



Immunohistochemical analysis of paraffin-embedded mouse eye tissue slide using 26598-1-AP (CRB1 antibody) at dilution of 1:200 (under 40x lens). Heat mediated antigen retrieval with Tris-EDTA buffer (pH 9.0).



Immunofluorescent analysis of (-20°C Ethanol) fixed SH-SY5Y cells using CRB1 antibody (26598-1-AP) at dilution of 1:800 and CoraLite® 488-Conjugated AffiniPure Goat Anti-Rabbit IgG(H+L).