

For Research Use Only

CRB1 Polyclonal antibody, PBS Only

Catalog Number: 26598-1-PBS



Basic Information

Catalog Number: 26598-1-PBS	GenBank Accession Number: BC136271	Purification Method: Antigen affinity purification
Size: 100ug, Concentration: 1 mg/ml by Nanodrop;	GeneID (NCBI): 23418	
Source: Rabbit	UNIPROT ID: P82279	
Isotype: IgG	Full Name: crumbs homolog 1 (Drosophila)	
Immunogen Catalog Number: AG24512	Calculated MW: 1406 aa, 154 kDa	
	Observed MW: 150 kDa	

Applications

Tested Applications:
IHC, IF/ICC, IF-P, Indirect ELISA

Species Specificity:
human, mouse

Background Information

CRB1, also known as protein crumbs homolog 1, is homologous to Drosophila Crumbs, a protein that is essential for establishing and maintaining apico-basal polarity in epithelia derived from the ectoderm (PMID: 2344615). CRB1 protein is a single transmembrane protein with a large extracellular part, containing three laminin A G domains and 19 epidermal growth-factor-like domains (PMID: 15494026, 18407265, 11734541). The expression of CRB1 is restricted to the retina and brain (PMID: 10508521). Mutations in CRB1 gene cause severe retinal dystrophies, ranging from retinitis pigmentosa (RP) to Leber congenital amaurosis (LCA) (PMID: 11734541).

Storage

Storage:
Store at -80°C.

Storage Buffer:
PBS Only

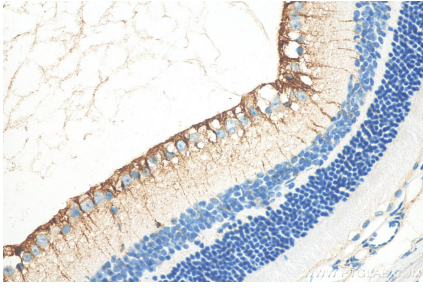
For technical support and original validation data for this product please contact:

T: 1 (888) 4PTGLAB (1-888-478-4522) (toll free in USA), or 1(312) 455-8498 (outside USA)

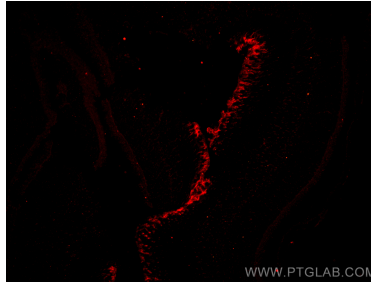
E: proteintech@ptglab.com
W: ptglab.com

This product is exclusively available under Proteintech Group brand and is not available to purchase from any other manufacturer.

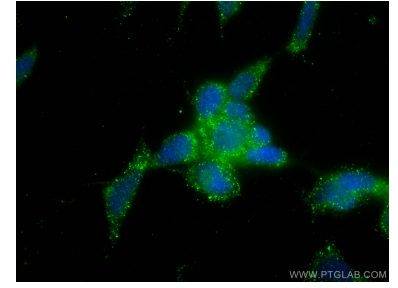
Selected Validation Data



Immunohistochemical analysis of paraffin-embedded mouse eye tissue slide using 26598-1-AP (CRB1 antibody) at dilution of 1:200 (under 40x lens). Heat mediated antigen retrieval with Tris-EDTA buffer (pH 9.0). This data was developed using the same antibody clone with 26598-1-PBS in a different storage buffer formulation.



Immunofluorescent analysis of (4% PFA) fixed paraffin-embedded mouse eye tissue using CRB1 antibody (26598-1-AP) at dilution of 1:200 and CoraLite®594-Conjugated Goat Anti-Rabbit IgG(H+L) (SA00013-4). Heat mediated antigen retrieval with Tris-EDTA buffer (pH 9.0). This data was developed using the same antibody clone with 26598-1-PBS in a different storage buffer formulation.



Immunofluorescent analysis of (-20°C Ethanol) fixed SH-SY5Y cells using CRB1 antibody (26598-1-AP) at dilution of 1:800 and CoraLite®488-Conjugated AffiniPure Goat Anti-Rabbit IgG(H+L). This data was developed using the same antibody clone with 26598-1-PBS in a different storage buffer formulation.