

For Research Use Only

# ELOVL5 Polyclonal antibody

Catalog Number: 26599-1-AP

Featured Product



## Basic Information

### Catalog Number:

26599-1-AP

### Size:

150ul, Concentration: 550 ug/ml by Nanodrop;

### Source:

Rabbit

### Isotype:

IgG

### Immunogen Catalog Number:

AG24786

### GenBank Accession Number:

BC017270

### GeneID (NCBI):

60481

### UNIPROT ID:

Q9NYP7

### Full Name:

ELOVL family member 5, elongation of long chain fatty acids (FEN1/Elo2, SUR4/Elo3-like, yeast)

### Calculated MW:

299 aa, 35 kDa

### Observed MW:

25 kDa

### Purification Method:

Antigen affinity purification

### Recommended Dilutions:

WB 1:1000-1:6000

IHC 1:50-1:500

IF/ICC 1:50-1:500

## Applications

### Tested Applications:

WB, IHC, IF/ICC, ELISA

### Species Specificity:

human, mouse, rat

**Note-IHC: suggested antigen retrieval with TE buffer pH 9.0; (\*) Alternatively, antigen retrieval may be performed with citrate buffer pH 6.0**

### Positive Controls:

**WB**: HeLa cells, MCF-7 cells, mouse kidney tissue, rat kidney tissue

**IHC**: mouse liver tissue,

**IF/ICC**: HepG2 cells, HeLa cells

## Background Information

Very long-chain fatty acid elongase 5 (ELOVL5) is a key enzyme for the endogenous synthesis of long-chain unsaturated fatty acids. A critical role of ELOVL5 in elongating fatty acid substrates ranging from 16 to 20 carbons was reported in humans and rodents (PMID: 29454701). ELOVL5 is involved in metastasis through lipid droplets-regulated TGF- $\beta$  receptor expression and is a predictive biomarker of metastatic ER+ breast cancer (PMID: 36056008). Western blot analysis detected ELOVL5 at an apparent molecular mass of ~25 kDa (PMID: 36056008, 32527375).

## Storage

### Storage:

Store at -20°C. Stable for one year after shipment.

### Storage Buffer:

PBS with 0.02% sodium azide and 50% glycerol pH 7.3.

Aliquoting is unnecessary for -20°C storage

\*\*\* 20ul sizes contain 0.1% BSA

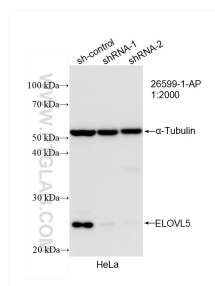
For technical support and original validation data for this product please contact:

T: 1 (888) 4PTGLAB (1-888-478-4522) (toll free in USA), or 1(312) 455-8498 (outside USA)

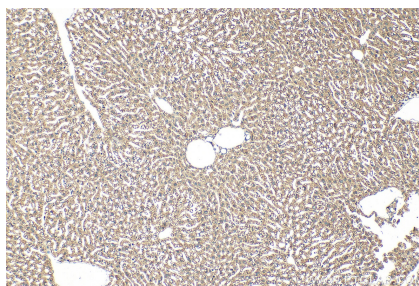
E: [proteintech@ptglab.com](mailto:proteintech@ptglab.com)  
W: [ptglab.com](http://ptglab.com)

This product is exclusively available under Proteintech Group brand and is not available to purchase from any other manufacturer.

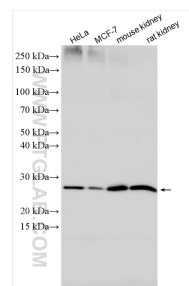
## Selected Validation Data



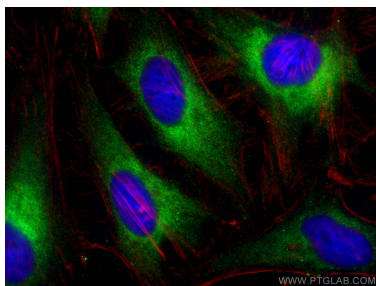
WB result of ELOVL5 antibody (26599-1-AP; 1:2000; incubated at room temperature for 1.5 hours) with sh-Control and sh-ELOVL5 transfected HeLa cells.



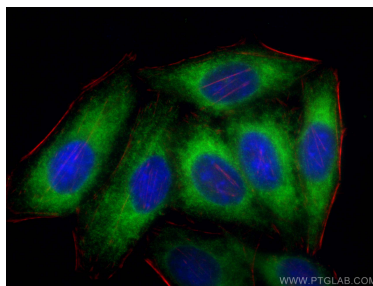
Immunohistochemical analysis of paraffin-embedded mouse liver tissue slide using 26599-1-AP (ELOVL5 antibody) at dilution of 1:200 (under 10x lens). Heat mediated antigen retrieval with Tris-EDTA buffer (pH 9.0).



Various lysates were subjected to SDS PAGE followed by western blot with 26599-1-AP (ELOVL5 antibody) at dilution of 1:3000 incubated at room temperature for 1.5 hours.



Immunofluorescent analysis of (-20°C Ethanol) fixed HeLa cells using ELOVL5 antibody (26599-1-AP) at dilution of 1:200 and CoraLite®488-Conjugated Goat Anti-Rabbit IgG(H+L) (SA00013-2), CL594-phalloidin (red).



Immunofluorescent analysis of (-20°C Ethanol) fixed HepG2 cells using ELOVL5 antibody (26599-1-AP) at dilution of 1:200 and CoraLite®488-Conjugated Goat Anti-Rabbit IgG(H+L) (SA00013-2), CL594-phalloidin (red).