

For Research Use Only

SLC40A1/FPN1 Polyclonal antibody

Catalog Number: 26601-1-AP

93 Publications



Basic Information

Catalog Number:

26601-1-AP

Size:

150ul, Concentration: 600 ug/ml by Nanodrop;

Source:

Rabbit

Isotype:

IgG

Immunogen Catalog Number:

AG24273

GenBank Accession Number:

BC037733

GeneID (NCBI):

30061

UNIPROT ID:

Q9NP59

Full Name:

solute carrier family 40 (iron-regulated transporter), member 1

Calculated MW:

62 kDa

Observed MW:

62-70 kDa

Purification Method:

Antigen affinity purification

Recommended Dilutions:

WB 1:500-1:2000

IHC 1:50-1:500

Applications

Tested Applications:

WB, IHC, ELISA

Cited Applications:

WB, IHC, IF

Species Specificity:

human, mouse, rat

Cited Species:

human, mouse, rat, pig, chicken, zebrafish, bovine

Note-IHC: suggested antigen retrieval with TE buffer pH 9.0; (*) Alternatively, antigen retrieval may be performed with citrate buffer pH 6.0

Positive Controls:

WB: Caco-2 cells, mouse spleen tissue, HepG2 cells, mouse liver tissue, rat spleen, HEK-293T cells, SW480 cells

IHC: human liver tissue, mouse spleen tissue

Background Information

SLC40A1, also named as Ferroportin 1 (FPN1), is an iron transporter which is involved in iron export from duodenal epithelial cell and also in transfer of iron between maternal and fetal circulation. It has been reported that SLC40A1 mutations may lead to macrophage iron overload, hyperferritinemia, and normal transferrin saturation among ferroportin iron overload patients. This antibody detects 62-70 kDa protein as well as the fragments of 56 kDa and 35 kDa protein similar to papers in SDS-PAGE. (PMID: 21396368, 16054062, 18974313)

Notable Publications

Author	Pubmed ID	Journal	Application
Ping Han	36309297	Free Radic Biol Med	WB
Ling Zeng	34610361	Free Radic Biol Med	WB
Dian Jiao	36437694	Anat Rec (Hoboken)	WB

Storage

Storage:

Store at -20°C. Stable for one year after shipment.

Storage Buffer:

PBS with 0.02% sodium azide and 50% glycerol, pH7.3

Aliquoting is unnecessary for -20°C storage

*** 20ul sizes contain 0.1% BSA

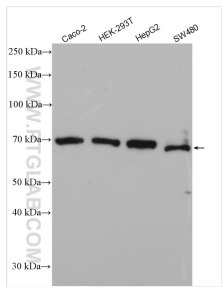
For technical support and original validation data for this product please contact:

T: 1 (888) 4PTGLAB (1-888-478-4522) (toll free in USA), or 1(312) 455-8498 (outside USA)

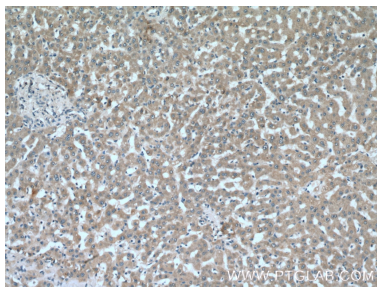
E: proteintech@ptglab.com
W: ptglab.com

This product is exclusively available under Proteintech Group brand and is not available to purchase from any other manufacturer.

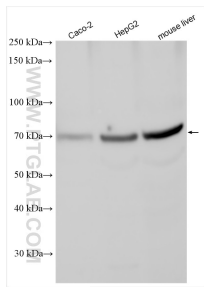
Selected Validation Data



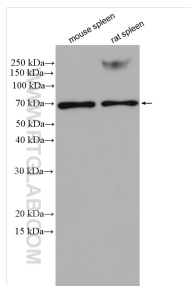
Various lysates were subjected to SDS PAGE followed by western blot with 26601-1-AP (SLC40A1/FPN1 antibody) at dilution of 1:1000 incubated at room temperature for 1.5 hours.



Immunohistochemical analysis of paraffin-embedded human liver tissue slide using 26601-1-AP (SLC40A1 Antibody) at dilution of 1:200 (under 10x lens).



Various lysates were subjected to SDS PAGE followed by western blot with 26601-1-AP (SLC40A1/FPN1 antibody) at dilution of 1:2000 incubated at room temperature for 1.5 hours.



Various lysates were subjected to SDS PAGE followed by western blot with 26601-1-AP (SLC40A1 antibody) at dilution of 1:800 incubated at room temperature for 1.5 hours.