

For Research Use Only

LOXL1 Polyclonal antibody

Catalog Number: 26608-1-AP **1 Publications**



Basic Information

Catalog Number: 26608-1-AP	GenBank Accession Number: BC015090	Purification Method: Antigen affinity purification
Size: 150ul , Concentration: 550 µg/ml by Nanodrop and 333 µg/ml by Bradford method using BSA as the standard;	GeneID (NCBI): 4016	Recommended Dilutions: WB 1:500-1:2000
Source: Rabbit	Full Name: lysyl oxidase-like 1	
Isotype: IgG	Calculated MW: 63 kDa	
Immunogen Catalog Number: AG24293	Observed MW: 63 kDa	

Applications

Tested Applications: WB,ELISA	Positive Controls: WB : MCF-7 cells,
Cited Applications: WB	
Species Specificity: human	
Cited Species: human	

Background Information

Three LOXL1 variants are seen: a band of 64 kDa matching the predicted full-length form lacking the secretory signal peptide, a band of 67 kDa presumed to be the full-length form with the signal peptide, and a band of 36 kDa matching the cleavage product.

Notable Publications

Author	Pubmed ID	Journal	Application
Ni Luh Gede Yoni Komalasari	37091157	Front Oncol	WB

Storage

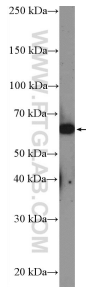
Storage:
Store at -20°C. Stable for one year after shipment.
Storage Buffer:
PBS with 0.02% sodium azide and 50% glycerol pH 7.3.
Aliquoting is unnecessary for -20°C storage

***** 20ul sizes contain 0.1% BSA**

For technical support and original validation data for this product please contact:
T: 1 (888) 4PTGLAB (1-888-478-4522) (toll free in USA), or 1(312) 455-8498 (outside USA)
E: proteintech@ptglab.com
W: ptglab.com

This product is exclusively available under Proteintech Group brand and is not available to purchase from any other manufacturer.

Selected Validation Data



MCF-7 cells were subjected to SDS PAGE followed by western blot with 26608-1-AP (LOXL1 Antibody) at dilution of 1:1000 incubated at room temperature for 1.5 hours.