

For Research Use Only

# SLC26A1 Polyclonal antibody

Catalog Number: 26611-1-AP

1 Publications



## Basic Information

### Catalog Number:

26611-1-AP

### Size:

150ul, Concentration: 900 ug/ml by Nanodrop and 533 ug/ml by Bradford method using BSA as the standard;

### Source:

Rabbit

### Isotype:

IgG

### Immunogen Catalog Number:

AG24306

### GenBank Accession Number:

BC015517

### GeneID (NCBI):

10861

### UNIPROT ID:

Q9H2B4

### Full Name:

solute carrier family 26 (sulfate transporter), member 1

### Calculated MW:

75 kDa

### Observed MW:

70 kDa-85 kDa

### Purification Method:

Antigen affinity purification

### Recommended Dilutions:

WB 1:500-1:1000

IP 0.5-4.0 ug for 1.0-3.0 mg of total protein lysate

## Applications

### Tested Applications:

WB, IP, ELISA

### Cited Applications:

WB

### Species Specificity:

human, mouse

### Cited Species:

human

### Positive Controls:

WB : HEK-293 cells, mouse spleen tissue

IP : mouse kidney tissue,

## Notable Publications

Author	Pubmed ID	Journal	Application
Martin Walter	36410050	Chem Res Toxicol	WB

## Storage

### Storage:

Store at -20°C. Stable for one year after shipment.

### Storage Buffer:

PBS with 0.02% sodium azide and 50% glycerol pH 7.3.

Aliquoting is unnecessary for -20°C storage

\*\*\* 20ul sizes contain 0.1% BSA

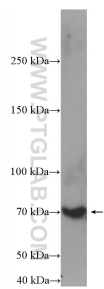
For technical support and original validation data for this product please contact:

T: 1 (888) 4PTGLAB (1-888-478-4522) (toll free in USA), or 1(312) 455-8498 (outside USA)

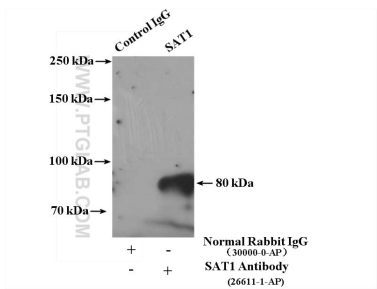
E: [proteintech@ptglab.com](mailto:proteintech@ptglab.com)  
W: [ptglab.com](http://ptglab.com)

This product is exclusively available under Proteintech Group brand and is not available to purchase from any other manufacturer.

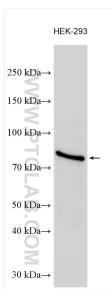
Selected Validation Data



mouse spleen tissue were subjected to SDS PAGE followed by western blot with 26611-1-AP (SAT1 antibody) at dilution of 1:300 incubated at room temperature for 1.5 hours.



IP result of anti-SAT1 (IP:26611-1-AP, 4ug; Detection:26611-1-AP 1:1000) with mouse kidney tissue lysate 5400ug.



HEK-293 cells were subjected to SDS PAGE followed by western blot with 26611-1-AP (SAT1 antibody) at dilution of 1:600 incubated at room temperature for 1.5 hours.