

For Research Use Only

# CATSPERB Polyclonal antibody

Catalog Number: 26633-1-AP



## Basic Information

**Catalog Number:**

26633-1-AP

**Size:**

150ul , Concentration: 800 ug/ml by Nanodrop and 400 ug/ml by Bradford method using BSA as the standard;

**Source:**

Rabbit

**Isotype:**

IgG

**Immunogen Catalog Number:**

AG23393

**GenBank Accession Number:**

BC126214

**GeneID (NCBI):**

79820

**UNIPROT ID:**

Q9H7T0

**Full Name:**

cation channel, sperm-associated, beta

**Observed MW:**

72 kDa

**Purification Method:**

Antigen affinity purification

**Recommended Dilutions:**

WB 1:500-1:1000

## Applications

**Tested Applications:**

WB, ELISA

**Species Specificity:**

human, mouse

**Positive Controls:**

WB : L02 cells, mouse liver tissue

## Background Information

CATSPERB, also named as C14orf161 and CatSper-beta, is involved in sperm cell hyperactivation via its association with CATSPER1. CATSPERB has two isoforms with MW 127 kDa and 72 kDa.

## Storage

**Storage:**

Store at -20°C. Stable for one year after shipment.

**Storage Buffer:**

PBS with 0.02% sodium azide and 50% glycerol pH 7.3.

Aliquoting is unnecessary for -20°C storage

\*\*\* 20ul sizes contain 0.1% BSA

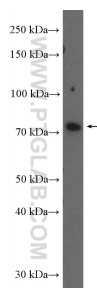
For technical support and original validation data for this product please contact:

T: 1 (888) 4PTGLAB (1-888-478-4522) (toll free in USA), or 1(312) 455-8498 (outside USA)

E: [proteintech@ptglab.com](mailto:proteintech@ptglab.com)  
W: [ptglab.com](http://ptglab.com)

This product is exclusively available under Proteintech Group brand and is not available to purchase from any other manufacturer.

## Selected Validation Data



L02 cells were subjected to SDS PAGE followed by western blot with 26633-1-AP (CATSPERB Antibody) at dilution of 1:600 incubated at room temperature for 1.5 hours.