

For Research Use Only

CFDP1 Polyclonal antibody

Catalog Number: 26636-1-AP

Featured Product

2 Publications



Basic Information

Catalog Number:

26636-1-AP

Size:

150ul, Concentration: 1500 ug/ml by Nanodrop and 833 ug/ml by Bradford method using BSA as the standard;

Source:

Rabbit

Isotype:

IgG

Immunogen Catalog Number:

AG24425

GenBank Accession Number:

BC000991

GeneID (NCBI):

10428

UNIPROT ID:

Q9UEE9

Full Name:

craniofacial development protein 1

Calculated MW:

299 aa, 34 kDa

Observed MW:

45-50 kDa

Purification Method:

Antigen affinity purification

Recommended Dilutions:

WB 1:1000-1:4000

Applications

Tested Applications:

WB, ELISA

Cited Applications:

WB

Species Specificity:

human

Cited Species:

human

Positive Controls:

WB : HeLa cells, K-562 cells, HEK-293 cells

Notable Publications

Author	Pubmed ID	Journal	Application
Yan Zhou	35861040	Cancer Med	WB
Shintaro Iwashita	32432658	Biosci Rep	WB

Storage

Storage:

Store at -20°C. Stable for one year after shipment.

Storage Buffer:

PBS with 0.02% sodium azide and 50% glycerol pH 7.3.

Aliquoting is unnecessary for -20°C storage

*** 20ul sizes contain 0.1% BSA

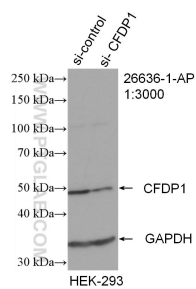
For technical support and original validation data for this product please contact:

T: 1 (888) 4PTGLAB (1-888-478-4522) (toll free in USA), or 1(312) 455-8498 (outside USA)

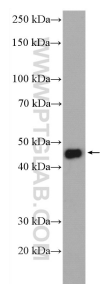
E: proteintech@ptglab.com
W: ptglab.com

This product is exclusively available under Proteintech Group brand and is not available to purchase from any other manufacturer.

Selected Validation Data



WB result of CFDP1 antibody (26636-1-AP; 1:3000; incubated at room temperature for 1.5 hours) with sh-Control and sh-CFDP1 transfected HEK-293 cells.



HeLa cells were subjected to SDS PAGE followed by western blot with 26636-1-AP (CFDP1 antibody) at dilution of 1:2000 incubated at room temperature for 1.5 hours.