

For Research Use Only

WSTF Polyclonal antibody, PBS Only

Catalog Number: 26641-1-PBS



Basic Information

Catalog Number:

26641-1-PBS

Size:

100ug, Concentration: 1 mg/ml by Nanodrop;

Source:

Rabbit

Isotype:

IgG

Immunogen Catalog Number:

AG24403

GenBank Accession Number:

BC136520

GeneID (NCBI):

9031

UNIPROT ID:

Q9UIGO

Full Name:

bromodomain adjacent to zinc finger domain, 1B

Calculated MW:

1483 aa, 171 kDa

Observed MW:

170 kDa

Purification Method:

Antigen affinity purification

Applications

Tested Applications:

WB, IF/ICC, ELISA

Species Specificity:

human

Storage

Storage:

Store at -80°C.

Storage Buffer:

PBS only, pH7.3

For technical support and original validation data for this product please contact:

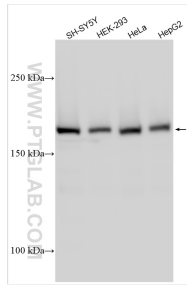
T: 1 (888) 4PTGLAB (1-888-478-4522) (toll free in USA), or 1(312) 455-8498 (outside USA)

E: proteintech@ptglab.com

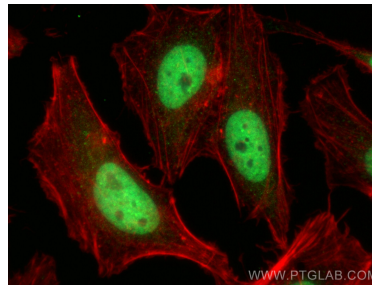
W: ptglab.com

This product is exclusively available under Proteintech Group brand and is not available to purchase from any other manufacturer.

Selected Validation Data



Various lysates were subjected to SDS PAGE followed by western blot with 26641-1-AP (WSTF antibody) at dilution of 1:600 incubated at room temperature for 1.5 hours. This data was developed using the same antibody clone with 26641-1-PBS in a different storage buffer formulation.



Immunofluorescent analysis of (4% PFA) fixed HeLa cells using WSTF antibody (26641-1-AP) at dilution of 1:400 and CoraLite@488-Conjugated Goat Anti-Rabbit IgG(H+L) (SA00013-2), CL594-phalloidin (red). This data was developed using the same antibody clone with 26641-1-PBS in a different storage buffer formulation.