

For Research Use Only

# TMEM138 Polyclonal antibody

Catalog Number: 26642-1-AP



## Basic Information

<b>Catalog Number:</b> 26642-1-AP	<b>GenBank Accession Number:</b> BC005201	<b>Purification Method:</b> Antigen affinity purification
<b>Size:</b> 150ul , Concentration: 1100 ug/ml by Nanodrop;	<b>GeneID (NCBI):</b> 51524	<b>Recommended Dilutions:</b> IF/ICC: 1:200-1:800
<b>Source:</b> Rabbit	<b>UNIPROT ID:</b> Q9NPIO	
<b>Isotype:</b> IgG	<b>Full Name:</b> transmembrane protein 138	
<b>Immunogen Catalog Number:</b> AG24487	<b>Calculated MW:</b> 162 aa, 19 kDa	

## Applications

<b>Tested Applications:</b> IF/ICC, ELISA	<b>Positive Controls:</b> IF/ICC : hTERT-RPE1 cells,
<b>Species Specificity:</b> human	

## Storage

**Storage:**  
Store at -20°C. Stable for one year after shipment.  
**Storage Buffer:**  
PBS with 0.02% sodium azide and 50% glycerol, pH7.3  
Aliquoting is unnecessary for -20°C storage

**\*\*\* 20ul sizes contain 0.1% BSA**

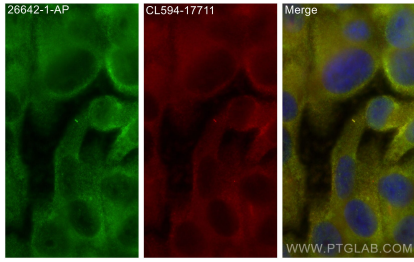
For technical support and original validation data for this product please contact:

T: 1 (888) 4PTGLAB (1-888-478-4522) (toll free in USA), or 1(312) 455-8498 (outside USA)

E: [proteintech@ptglab.com](mailto:proteintech@ptglab.com)  
W: [ptglab.com](http://ptglab.com)

This product is exclusively available under Proteintech Group brand and is not available to purchase from any other manufacturer.

## Selected Validation Data



Immunofluorescent analysis of (-20°C Methanol) fixed hTERT-RPE1 cells using TMEM138 antibody (26642-1-AP) at dilution of 1:400 and CoraLite®488-Conjugated Goat Anti-Rabbit IgG(H+L) (SA00013-2), CoraLite®594 ARL13B antibody (CL594-17711, red).