

For Research Use Only

REEP4 Polyclonal antibody

Catalog Number: 26650-1-AP

6 Publications



Basic Information

Catalog Number:

26650-1-AP

Size:

150ul, Concentration: 700 ug/ml by Nanodrop and 460 ug/ml by Bradford method using BSA as the standard;

Source:

Rabbit

Isotype:

IgG

Immunogen Catalog Number:

AG24569

GenBank Accession Number:

BC013048

GeneID (NCBI):

80346

UNIPROT ID:

Q9H6H4

Full Name:

receptor accessory protein 4

Calculated MW:

29 kDa

Observed MW:

29 kDa

Purification Method:

Antigen affinity purification

Recommended Dilutions:

WB 1:500-1:1000

IHC 1:50-1:500

IF/ICC 1:50-1:500

Applications

Tested Applications:

WB, IHC, IF/ICC, ELISA

Cited Applications:

WB, IHC, IF

Species Specificity:

human, mouse, rat

Cited Species:

human, mouse

Note-IHC: suggested antigen retrieval with TE buffer pH 9.0; (*) Alternatively, antigen retrieval may be performed with citrate buffer pH 6.0

Positive Controls:

WB : mouse testis tissue, rat testis tissue

IHC : human testis tissue,

IF/ICC : HeLa cells,

Notable Publications

Author	Pubmed ID	Journal	Application
Peng-Peng Zhu	35348668	Hum Mol Genet	WB
Pengli Zheng	34912111	Nature	WB
Shue Chen	39133213	J Cell Biol	WB

Storage

Storage:

Store at -20°C. Stable for one year after shipment.

Storage Buffer:

PBS with 0.02% sodium azide and 50% glycerol pH 7.3.

Aliquoting is unnecessary for -20°C storage

*** 20ul sizes contain 0.1% BSA

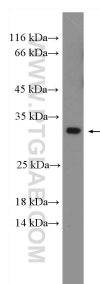
For technical support and original validation data for this product please contact:

T: 1 (888) 4PTGLAB (1-888-478-4522) (toll free in USA), or 1(312) 455-8498 (outside USA)

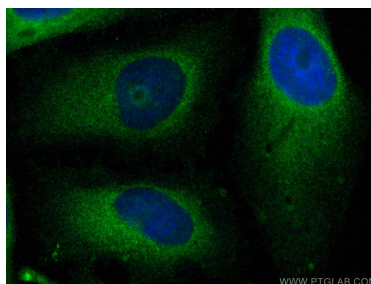
E: proteintech@ptglab.com
W: ptglab.com

This product is exclusively available under Proteintech Group brand and is not available to purchase from any other manufacturer.

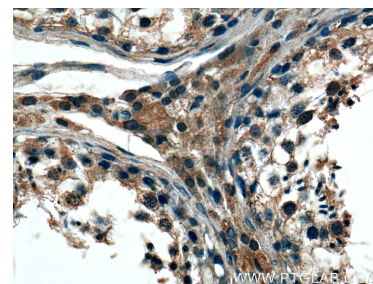
Selected Validation Data



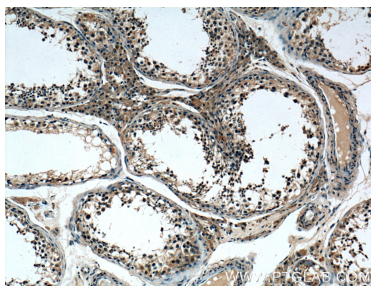
mouse testis tissue were subjected to SDS PAGE followed by western blot with 26650-1-AP (REEP4 Antibody) at dilution of 1:600 incubated at room temperature for 1.5 hours.



Immunofluorescent analysis of (-20°C Methanol) fixed HeLa cells using REEP4 antibody (26650-1-AP) at dilution of 1:200 and CoraLite®488-Conjugated AffiniPure Goat Anti-Rabbit IgG(H+L) (SA00013-2).



Immunohistochemical analysis of paraffin-embedded human testis tissue slide using 26650-1-AP (REEP4 Antibody) at dilution of 1:200 (under 40x lens).



Immunohistochemical analysis of paraffin-embedded human testis tissue slide using 26650-1-AP (REEP4 Antibody) at dilution of 1:200 (under 10x lens).