

For Research Use Only

LIN37 Polyclonal antibody

Catalog Number: 26651-1-AP

1 Publications



Basic Information

Catalog Number:

26651-1-AP

Size:

150ul, Concentration: 500 ug/ml by Nanodrop and 333 ug/ml by Bradford method using BSA as the standard;

Source:

Rabbit

Isotype:

IgG

Immunogen Catalog Number:

AG24565

GenBank Accession Number:

BC009071

GeneID (NCBI):

55957

UNIPROT ID:

Q96GY3

Full Name:

lin-37 homolog (C. elegans)

Observed MW:

36 kDa

Purification Method:

Antigen affinity purification

Recommended Dilutions:

WB 1:1000-1:6000

IF/ICC 1:200-1:800

Applications

Tested Applications:

WB, IF/ICC, ELISA

Cited Applications:

WB

Species Specificity:

human

Positive Controls:

WB : A549 cells, Jurkat cells

IF/ICC : A549 cells,

Background Information

LIN37, also named as Antolefinin and MSTP064, is a component of the DREAM complex (also named LINC complex). LIN37 migrates to 37 kDa for modification.

Notable Publications

Author	Pubmed ID	Journal	Application
Zhenwei Ma	39239750	Int J Oncol	WB

Storage

Storage:

Store at -20°C. Stable for one year after shipment.

Storage Buffer:

PBS with 0.02% sodium azide and 50% glycerol pH 7.3.

Aliquoting is unnecessary for -20°C storage

*** 20ul sizes contain 0.1% BSA

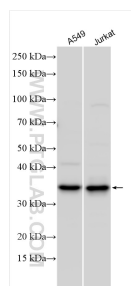
For technical support and original validation data for this product please contact:

T: 1 (888) 4PTGLAB (1-888-478-4522) (toll free in USA), or 1(312) 455-8498 (outside USA)

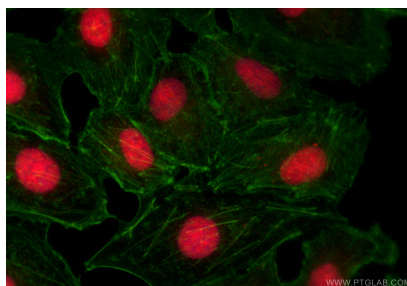
E: proteintech@ptglab.com
W: ptglab.com

This product is exclusively available under Proteintech Group brand and is not available to purchase from any other manufacturer.

Selected Validation Data



Various lysates were subjected to SDS PAGE followed by western blot with 26651-1-AP (LIN37 antibody) at dilution of 1:3000 incubated at room temperature for 1.5 hours.



Immunofluorescent analysis of (4% PFA) fixed A549 cells using LIN37 antibody (26651-1-AP) at dilution of 1:400 and CoraLite®594-Conjugated Goat Anti-Rabbit IgG(H+L) (SA00013-4), CL488-phalloidin (green).