

For Research Use Only

# EGFL7 Polyclonal antibody

Catalog Number: 26661-1-AP



## Basic Information

<b>Catalog Number:</b> 26661-1-AP	<b>GenBank Accession Number:</b> BC012377	<b>Purification Method:</b> Antigen affinity purification
<b>Size:</b> 150ul , Concentration: 500 ug/ml by Nanodrop;	<b>GeneID (NCBI):</b> 51162	<b>Recommended Dilutions:</b> WB 1:500-1:3000 IHC 1:50-1:500
<b>Source:</b> Rabbit	<b>UNIPROT ID:</b> Q9UHF1	
<b>Isotype:</b> IgG	<b>Full Name:</b> EGF-like-domain, multiple 7	
<b>Immunogen Catalog Number:</b> AG24693	<b>Calculated MW:</b> 273 aa, 30 kDa	
	<b>Observed MW:</b> 30 kDa	

## Applications

<b>Tested Applications:</b> WB, IHC, ELISA	<b>Positive Controls:</b>
<b>Species Specificity:</b> human	<b>WB :</b> COLO 320 cells, K-562 cells, RKO cells
<b>Note-IHC:</b> suggested antigen retrieval with <b>TE buffer pH 9.0; (*) Alternatively, antigen retrieval may be performed with citrate buffer pH 6.0</b>	<b>IHC :</b> human placenta tissue,

## Background Information

Epidermal growth factor-like protein 7 (EGFL7, also known as MEGF7, ZNEU1, and VE-STATIN) is a proangiogenic factor that has been widely described as having a vital role in tubulogenesis and regulation of angiogenesis, mainly during embryogenesis organogenesis (PMID: 22160377; 15162510). It also can reduce central nervous system inflammation and may play a role in tumorigenesis (PMID: 29483510; 37490307).

## Storage

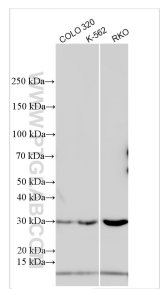
**Storage:**  
Store at -20°C. Stable for one year after shipment.  
**Storage Buffer:**  
PBS with 0.02% sodium azide and 50% glycerol pH 7.3.  
Aliquoting is unnecessary for -20°C storage

\*\*\* 20ul sizes contain 0.1% BSA

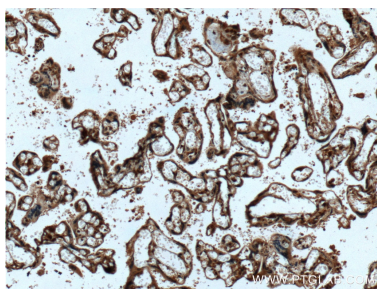
For technical support and original validation data for this product please contact:  
T: 1 (888) 4PTGLAB (1-888-478-4522) (toll free in USA), or 1(312) 455-8498 (outside USA)  
E: [proteintech@ptglab.com](mailto:proteintech@ptglab.com)  
W: [ptglab.com](http://ptglab.com)

This product is exclusively available under Proteintech Group brand and is not available to purchase from any other manufacturer.

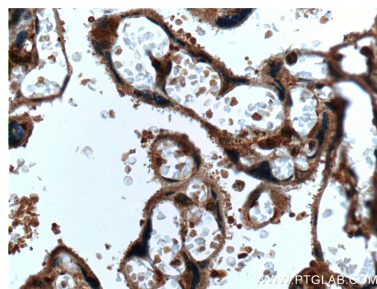
## Selected Validation Data



Various lysates were subjected to SDS PAGE followed by western blot with 26661-1-AP (EGFL7 antibody) at dilution of 1:1500 incubated at room temperature for 1.5 hours.



Immunohistochemical analysis of paraffin-embedded human placenta tissue slide using 26661-1-AP (EGFL7 antibody) at dilution of 1:200 (under 10x lens. Heat mediated antigen retrieval with Tris-EDTA buffer (pH 9.0).



Immunohistochemical analysis of paraffin-embedded human placenta tissue slide using 26661-1-AP (EGFL7 antibody) at dilution of 1:200 (under 40x lens. Heat mediated antigen retrieval with Tris-EDTA buffer (pH 9.0).