

For Research Use Only

SLC25A29 Polyclonal antibody

Catalog Number: 26663-1-AP

1 Publications



Basic Information

Catalog Number: 26663-1-AP	GenBank Accession Number: BC132966	Purification Method: Antigen affinity purification
Size: 150ul , Concentration: 300 ug/ml by Nanodrop and 267 ug/ml by Bradford method using BSA as the standard;	GeneID (NCBI): 123096	Recommended Dilutions: WB 1:500-1:1000 IHC 1:50-1:500
Source: Rabbit	UNIPROT ID: Q8N8R3	
Isotype: IgG	Full Name: solute carrier family 25, member 29	
Immunogen Catalog Number: AG24662	Calculated MW: 303 aa, 32 kDa	
	Observed MW: 32 kDa	

Applications

Tested Applications: WB, IHC, ELISA	Positive Controls:
Cited Applications: WB	WB : mouse brain tissue, rat brain tissue
Species Specificity: human, mouse, rat	IHC : human pancreas tissue,
Cited Species: human	

Note-IHC: suggested antigen retrieval with **TE buffer pH 9.0; (*) Alternatively, antigen retrieval may be performed with citrate buffer pH 6.0**

Notable Publications

Author	Pubmed ID	Journal	Application
Pengdou Zheng	37775731	Cancer Cell Int	WB

Storage

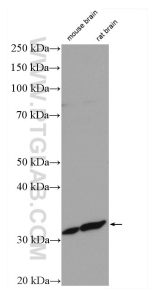
Storage:
Store at -20°C. Stable for one year after shipment.
Storage Buffer:
PBS with 0.02% sodium azide and 50% glycerol pH 7.3.
Aliquoting is unnecessary for -20°C storage

*** 20ul sizes contain 0.1% BSA

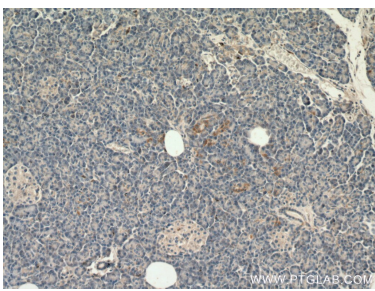
For technical support and original validation data for this product please contact:
T: 1 (888) 4PTGLAB (1-888-478-4522) (toll free in USA), or 1(312) 455-8498 (outside USA)
E: proteintech@ptglab.com
W: ptglab.com

This product is exclusively available under Proteintech Group brand and is not available to purchase from any other manufacturer.

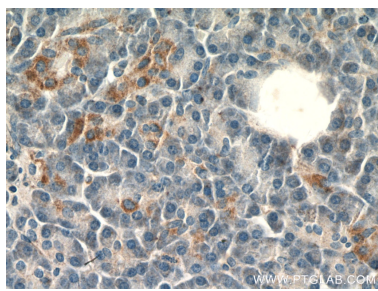
Selected Validation Data



Various lysates were subjected to SDS PAGE followed by western blot with 26663-1-AP (SLC25A29 antibody) at dilution of 1:800 incubated at room temperature for 1.5 hours.



Immunohistochemical analysis of paraffin-embedded human pancreas tissue slide using 26663-1-AP (SLC25A29 antibody) at dilution of 1:200 (under 10x lens).



Immunohistochemical analysis of paraffin-embedded human pancreas tissue slide using 26663-1-AP (SLC25A29 antibody) at dilution of 1:200 (under 40x lens).