

For Research Use Only

Calsequestrin 1 Polyclonal antibody



Catalog Number: 26665-1-AP

4 Publications

Basic Information

| | | |
|---|---|---|
| Catalog Number: 26665-1-AP | GenBank Accession Number: BC022289 | Purification Method: Antigen affinity purification |
| Size: 150ul, Concentration: 850 µg/ml by Nanodrop and 500 µg/ml by Bradford method using BSA as the standard; | GeneID (NCBI): 844 | Recommended Dilutions: WB 1:1000-1:6000 IHC 1:50-1:500 |
| Source: Rabbit | Full Name: calsequestrin 1 (fast-twitch, skeletal muscle) | |
| Isotype: IgG | Calculated MW: 390 aa, 45 kDa | |
| Immunogen Catalog Number: AG24684 | Observed MW: 45 kDa, 63 kDa | |

Applications

| | |
|---|---|
| Tested Applications: IHC, WB, ELISA | Positive Controls: |
| Cited Applications: IHC, WB | WB: mouse heart tissue, |
| Species Specificity: human, mouse | IHC: human skeletal muscle tissue, |
| Cited Species: human, mouse | |

Note-IHC: suggested antigen retrieval with TE buffer pH 9.0; (*) Alternatively, antigen retrieval may be performed with citrate buffer pH 6.0

Background Information

Notable Publications

| Author | Pubmed ID | Journal | Application |
|------------------|-----------|-------------------------|-------------|
| Patricia Franzka | 34124155 | Front Mol Biosci | WB |
| Nagakatsu Harada | 32451822 | J Muscle Res Cell Motil | WB |
| Yingchao Shi | 35167494 | JCI Insight | WB |

Storage

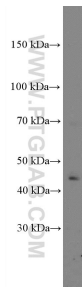
Storage:
Store at -20°C. Stable for one year after shipment.
Storage Buffer:
PBS with 0.02% sodium azide and 50% glycerol pH 7.3.
Aliquoting is unnecessary for -20°C storage

*** 20ul sizes contain 0.1% BSA

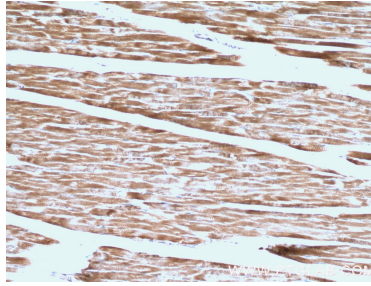
For technical support and original validation data for this product please contact:
T: 1 (888) 4PTGLAB (1-888-478-4522) (toll free in USA), or 1(312) 455-8498 (outside USA)
E: proteintech@ptglab.com
W: ptglab.com

This product is exclusively available under Proteintech Group brand and is not available to purchase from any other manufacturer.

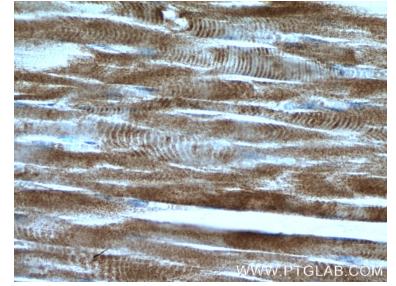
Selected Validation Data



mouse heart tissue were subjected to SDS PAGE followed by western blot with 26665-1-AP (Calsequestrin antibody at dilution of 1:3000 incubated at room temperature for 1.5 hours.



Immunohistochemical analysis of paraffin-embedded human skeletal muscle tissue slide using 26665-1-AP(Calsequestrin antibody) at dilution of 1:200 (under 10x lens).



Immunohistochemical analysis of paraffin-embedded human skeletal muscle tissue slide using 26665-1-AP(Calsequestrin antibody) at dilution of 1:200 (under 40x lens).