

For Research Use Only

BDKRB1 Polyclonal antibody

Catalog Number: 26672-1-AP

2 Publications



Basic Information

Catalog Number:

26672-1-AP

Size:

150ul, Concentration: 650 ug/ml by Nanodrop and 367 ug/ml by Bradford method using BSA as the standard;

Source:

Rabbit

Isotype:

IgG

Immunogen Catalog Number:

AG24745

GenBank Accession Number:

BC034705

GeneID (NCBI):

623

UNIPROT ID:

P46663

Full Name:

bradykinin receptor B1

Calculated MW:

353 aa, 40 kDa

Observed MW:

40 kDa

Purification Method:

Antigen affinity purification

Recommended Dilutions:

WB 1:1000-1:4000

IHC 1:50-1:500

Applications

Tested Applications:

WB, IHC, ELISA

Cited Applications:

WB, IHC

Species Specificity:

human

Cited Species:

human

Note-IHC: suggested antigen retrieval with TE buffer pH 9.0; (*) Alternatively, antigen retrieval may be performed with citrate buffer pH 6.0

Positive Controls:

WB : HUVEC cells,

IHC : human kidney tissue, human pancreas tissue

Notable Publications

Author	Pubmed ID	Journal	Application
Xiao-Tian Ni	35634493	Front Endocrinol (Lausanne)	IHC
Miho Shukuri	39065752	Pharmaceuticals (Basel)	WB

Storage

Storage:

Store at -20°C. Stable for one year after shipment.

Storage Buffer:

PBS with 0.02% sodium azide and 50% glycerol pH 7.3.

Aliquoting is unnecessary for -20°C storage

*** 20ul sizes contain 0.1% BSA

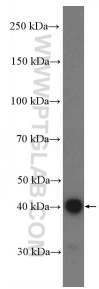
For technical support and original validation data for this product please contact:

T: 1 (888) 4PTGLAB (1-888-478-4522) (toll free in USA), or 1(312) 455-8498 (outside USA)

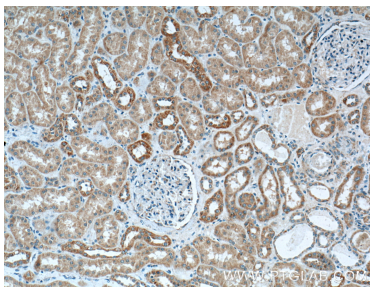
E: proteintech@ptglab.com
W: ptglab.com

This product is exclusively available under Proteintech Group brand and is not available to purchase from any other manufacturer.

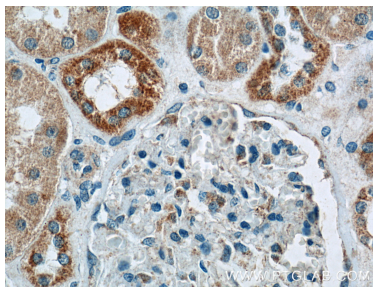
Selected Validation Data



HUVEC cells were subjected to SDS PAGE followed by western blot with 26672-1-AP (BDKRB1 Antibody) at dilution of 1:2000 incubated at room temperature for 1.5 hours.



Immunohistochemical analysis of paraffin-embedded human kidney tissue slide using 26672-1-AP (BDKRB1 Antibody) at dilution of 1:200 (under 10x lens).



Immunohistochemical analysis of paraffin-embedded human kidney tissue slide using 26672-1-AP (BDKRB1 Antibody) at dilution of 1:200 (under 40x lens).